



# SV-X150

Doble retenedor

sistemas para puertas correderas

Polígono Industrial Foradada - 08580 - Sant Quirze de Besora (Barcelona)  
 Telf. 34-93.852.92.23  
 Export. Telf. 34-93.852.96.15  
 e-mail: saheco@saheco.com - web: www.saheco.com

MADE IN E.U.

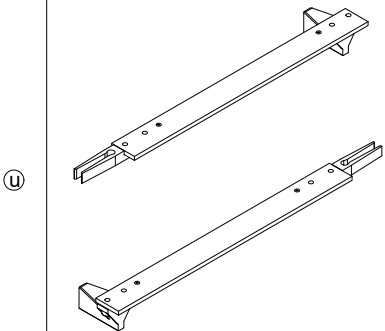
**GRUPO TORREMAT** MAX. 150 kg



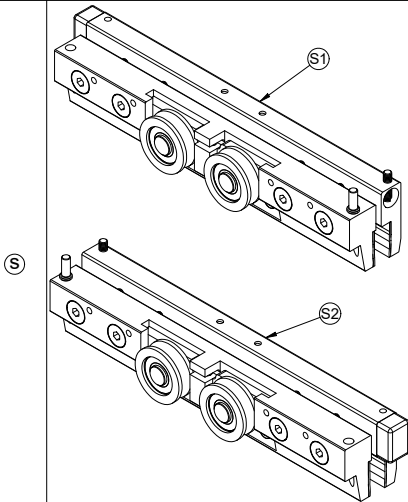
SEP 2019

038060738

015505

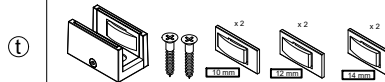


1

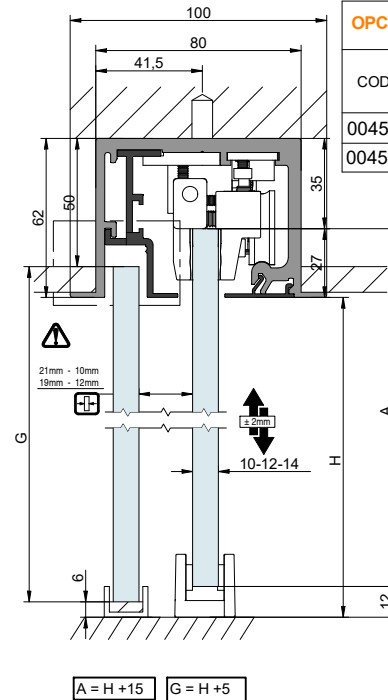
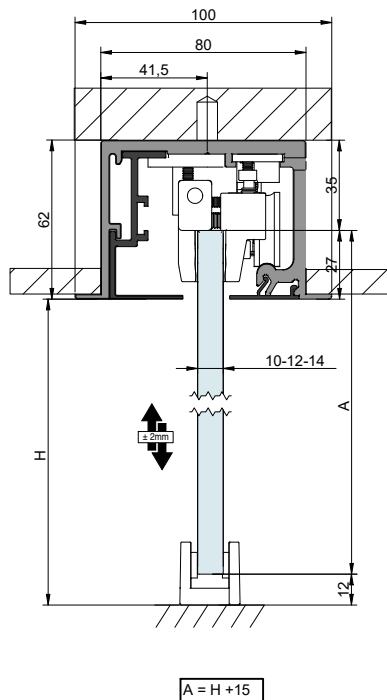
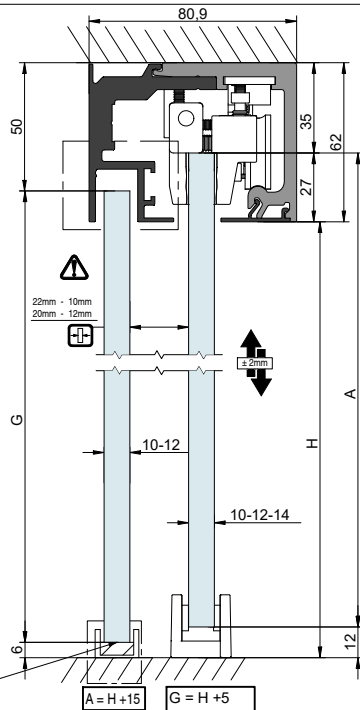
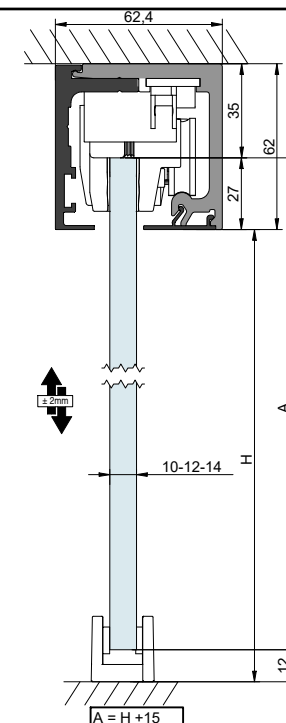
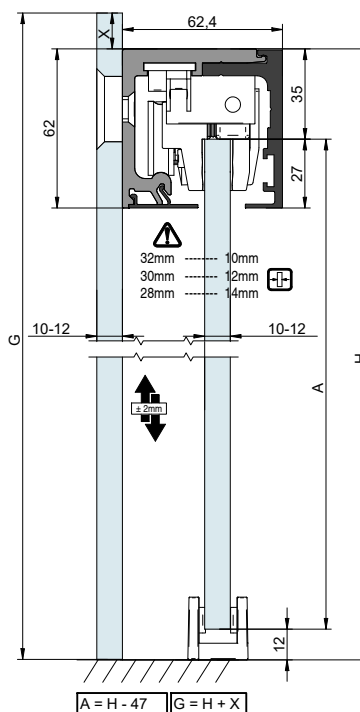
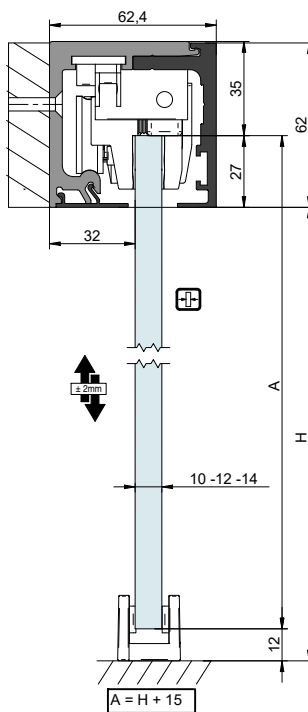


1

015573

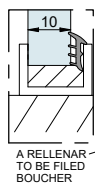
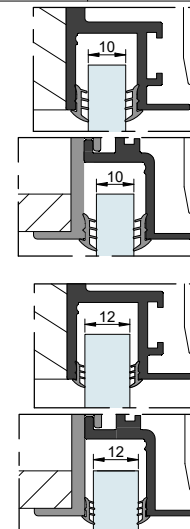


1

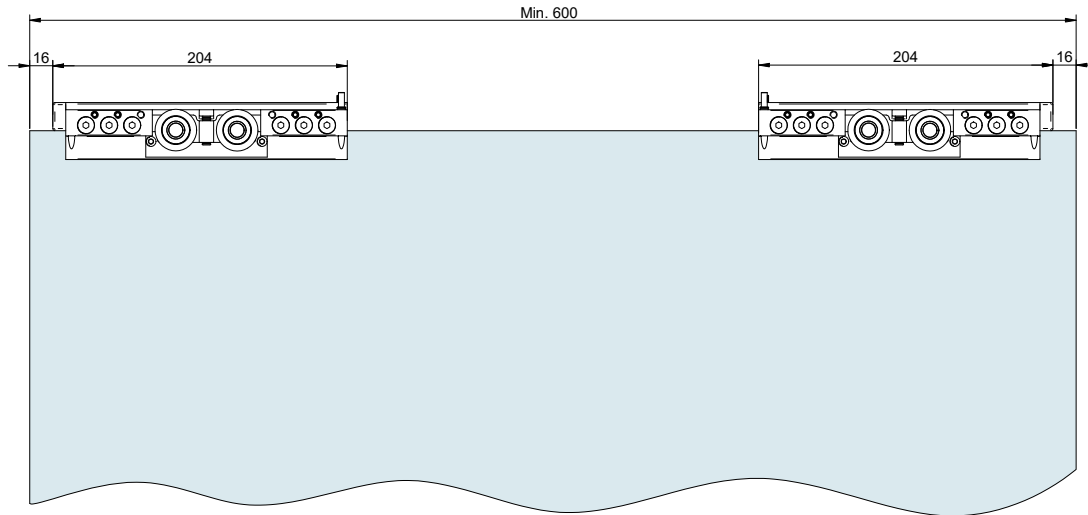


**OPCIONAL / Optional / Optionnel**

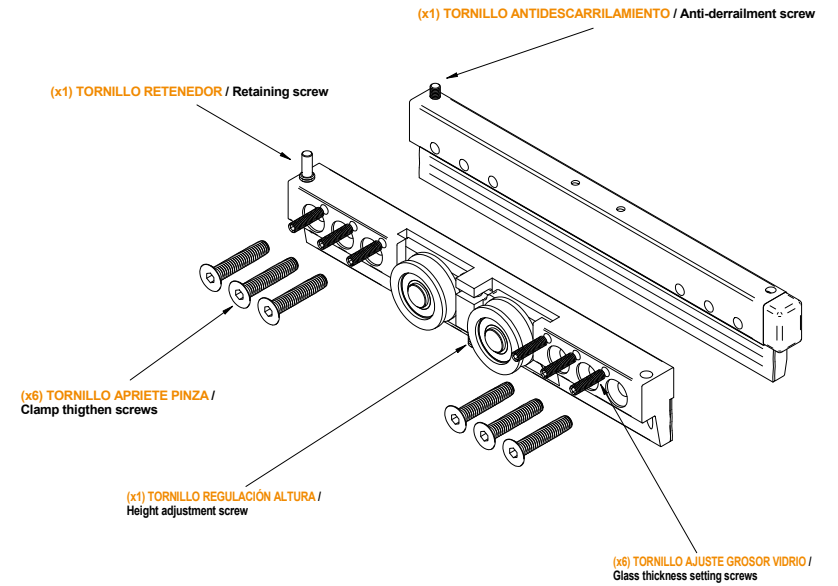
CODE	mm.	JUNTA PVC PVC GASKET JOIN PVC
004582	12	
004587	10	



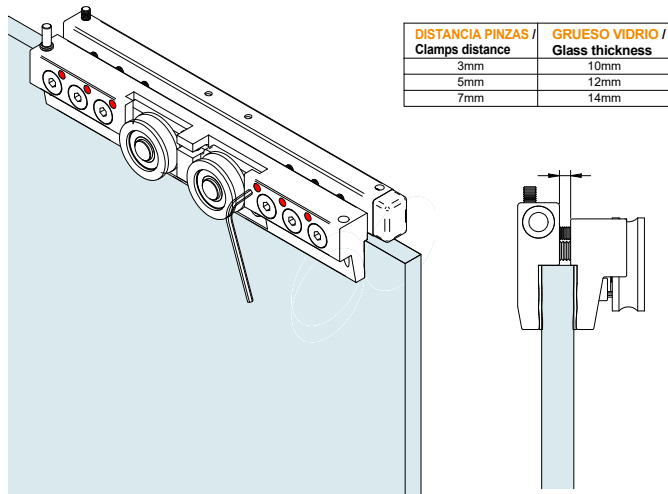
① **MONTAJE PINZAS / Clamps assembly**



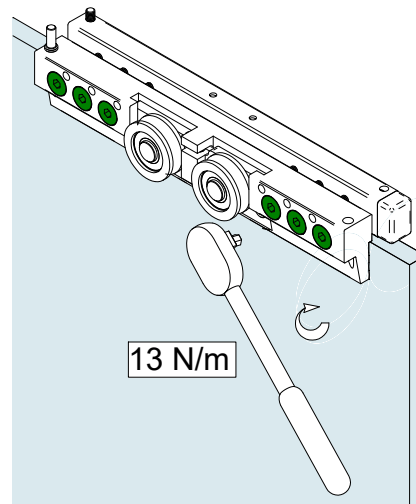
②



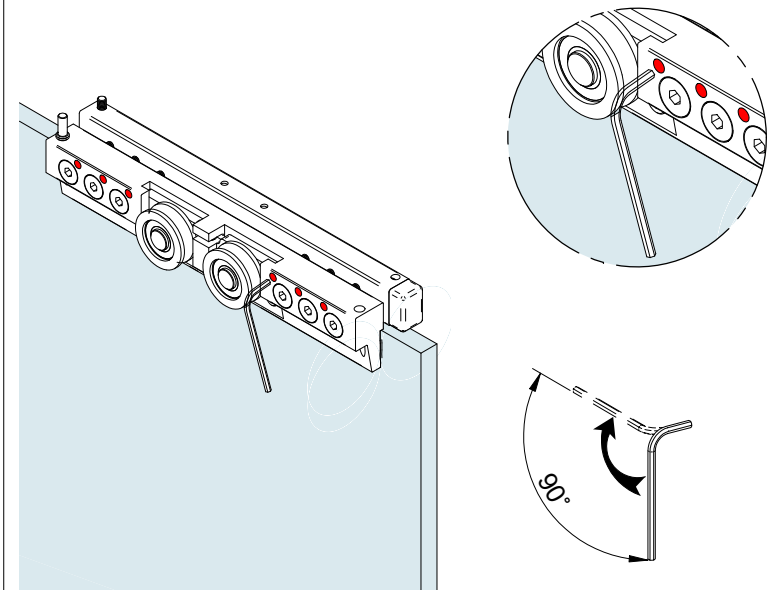
③ **PRIMER PASO: AJUSTAR TORNILLOS AJUSTE GROSOR VIDRIO/**  
First step: Adjust glass thickness screws



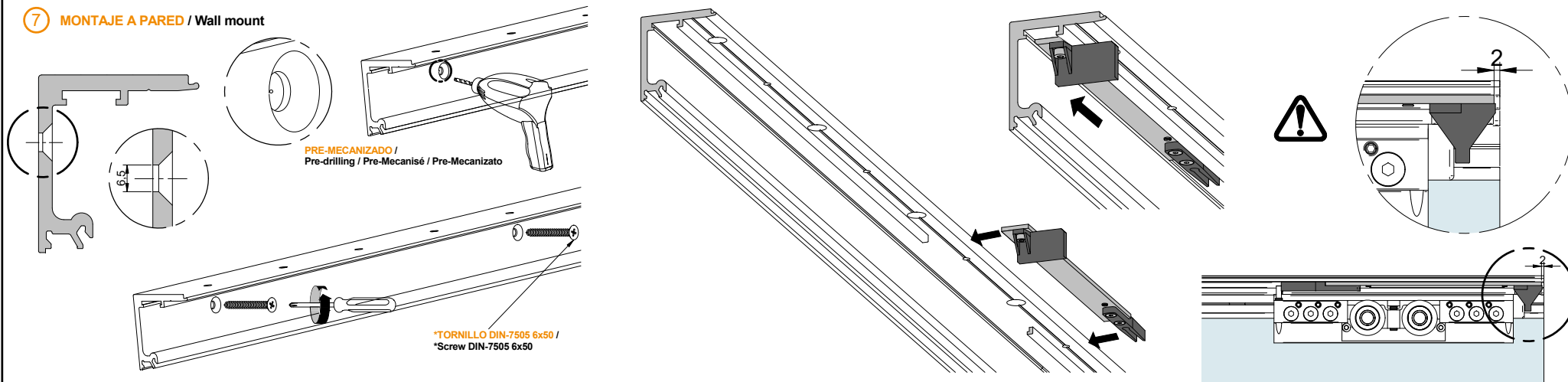
④ **SEGUNDO PASO: APRETAR TORNILLOS APRIETE PINZA/**  
Second step: Strenght clamp thigten screws



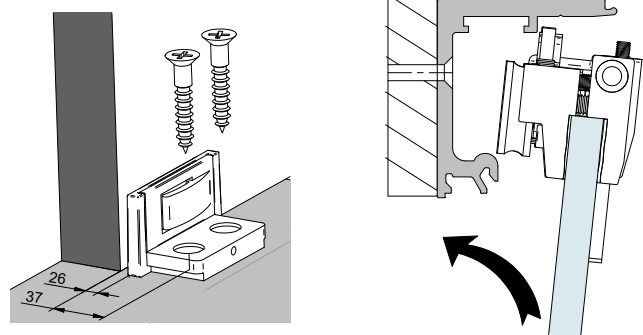
⑤ **TERCER PASO: APRETAR TORNILLOS AJUSTE GROSOR VIDRIO/**  
Third step: Strenght the glass thickness screws



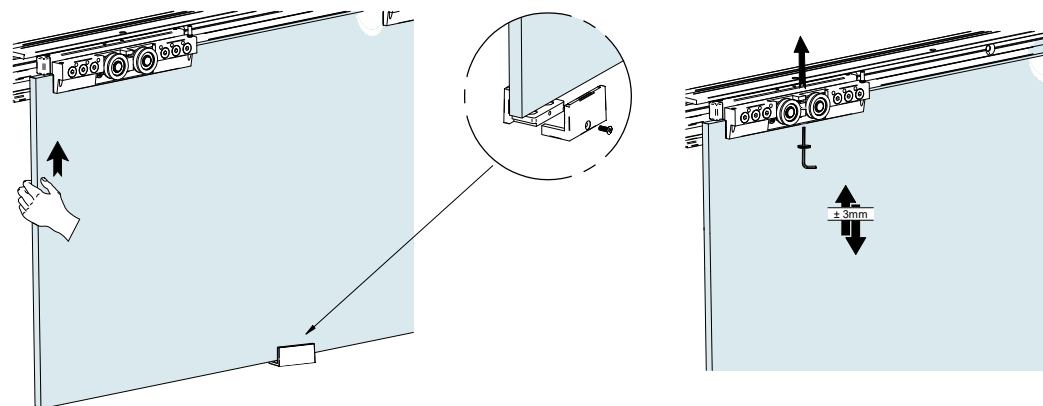
7 MONTAJE A PARED / Wall mount



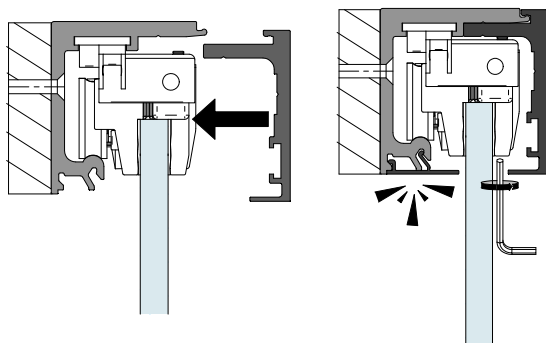
8 GUIADOR / Guide



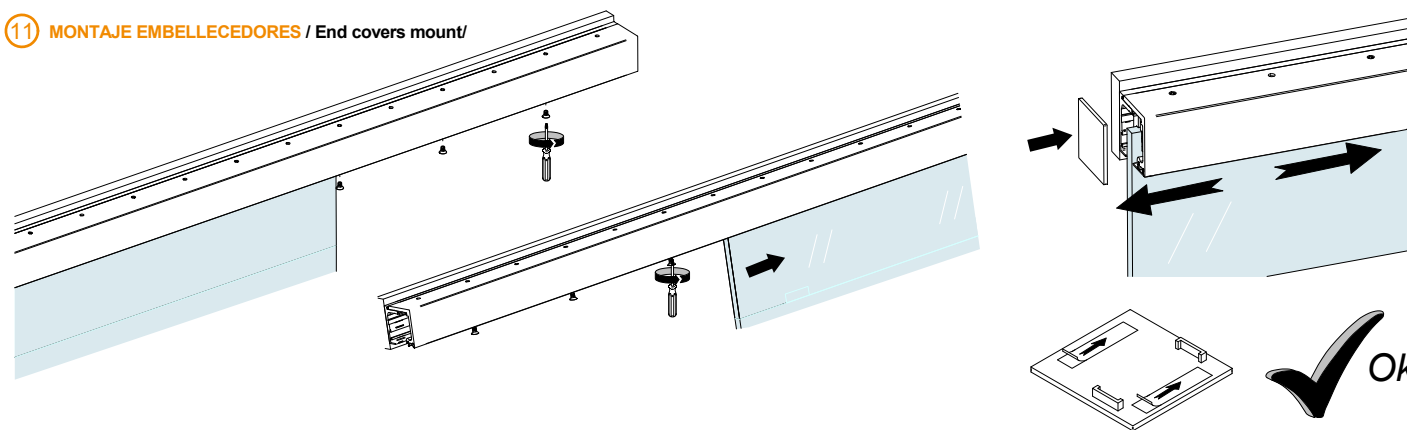
9 GRADUACIÓN ALTURA / Height adjustment



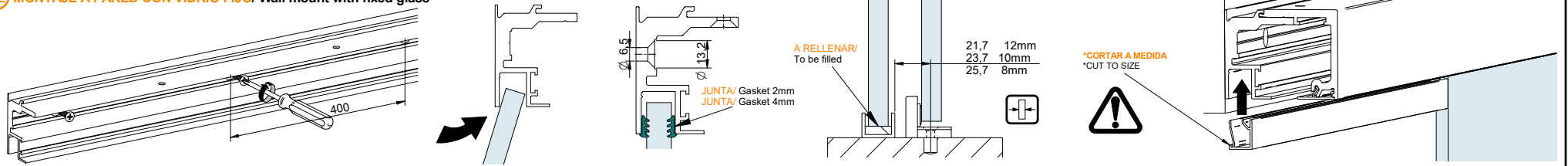
10 ANTIDESCARRILAMIENTO / Anti-derailment



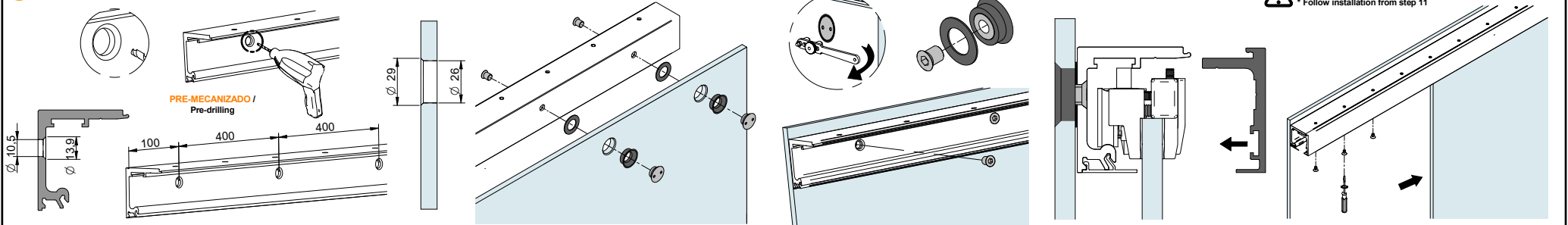
11 MONTAJE EMBELLECEDORES / End covers mount/



**12 MONTAJE A PARED CON VIDRIO FIJO/ Wall mount with fixed glass**



**13 MONTAJE A PARED DE VIDRIO / Glass wall mount**



**14 MONTAJE A FALSO TECHO CON VIDRIO FIJO/ False ceiling mount with fixed glass**

PARA VARIANTE FALSO TECHO CON VIDRIO FIJO MINIMO DE HOJA CORREDERA 620mm  
For false ceiling mount with fixed glass minimum size of sliding glass 620mm

