

SLIDING DOOR GEAR SYSTEMS

FURNITURE

TIMBER

INDUSTRIAL

GLASS

STAINLESS STEEL



INTERNATIONAL SELECTION

 **saheco**
mechanisms for sliding doors

A leading company in the sector

Saheco specialises in the design,
manufacture and distribution of
mechanisms for sliding doors.

WELCOME TO OUR WORLD

SAHECO are a manufacturer of high quality and innovative sliding door gear systems for all types of sliding doors, based near Barcelona in Spain. The company has over 40 years of experience in the design, manufacture and supply of sliding door gear systems, both to the Spanish domestic market where the company is a market leader, but also internationally, with trading relationships in place with distributors in over 30 countries.

Today SAHECO deals with over 3,000 customers on a worldwide basis, has a group turnover in excess of 12 € million per annum, has a product portfolio comprising over 1500 individual product references, and owns 15 internationally recognised and approved patents. In the last 12 months the company has manufactured and supplied in excess of 450,000 sliding door accessory packs, including over 1 million rollers, and in the region of 2,800km of sliding door track, in various materials.

This specific catalogue has been designed to introduce you, the customer, to this exciting SAHECO project, and more importantly to introduce you to the SAHECO product range; many of our best-selling systems for furniture, timber partitions and glazed partitions are shown in full detail; all offer the two primary features which characterise all SAHECO products; high quality with a smooth and quiet sliding action combined with exceptional value for money. This catalogue does not, and was not intended to show our complete product range, but we are confident that if you, the customer, have an application requiring a sliding door, then we will have a solution for you; if you cannot see an appropriate product in this catalogue please visit our website saheco.com or contact your local SAHECO Business Partner who will be delighted to assist you.

Once again welcome to our world....we look forward to working together with you in the coming months and years and to providing you with the first class service we pride ourselves on, and which we always consider to be of equal importance to the top quality product portfolio we can offer.

SLIDING DOOR GEAR SYSTEMS

FURNITURE
TIMBER
INDUSTRIAL
GLASS
STAINLESS STEEL

Page	Product	FURNITURE	TIMBER	INDUSTRIAL	GLASS	STAINLESS STEEL
		kg	kg	kg	kg	kg
		MAX WEIGHT PER PANEL				
6	SF-16 SF-26 SF-20 SF-30 SF-33 SF-53 Packed sets available	16 26 20 30 30 50				
7	SF-25 Packed sets available SF-51 Packed sets available	25 50				
8	SF-22 SF-24 Packed sets available SF-42 Packed sets available	22 24 42				
9	SF-S35 SL-12 SL-18	35 12 18				
10	SF-14 D SF-20 D Packed sets available SF-50 D SF-60 D	7 10 25 30				
11	SL-45 NEW Packed sets available	45				
12	SF-I150 D	75				
13	SF-70 SF-150 SF-35 / SF-65 SF-40 / SF-75 Packed sets available	70 150 35/65 40/75				
14	SF-E40 SF-E75 Packed sets available		40 75			
15	SF-A61 SF-A81 + SOFTBRAKE Packed sets available		60 80			
16	SF-A100 SF-A125 SF-A300		100 125 300			
17	SF-RA60 SF-RA80 SF-RA100 SF-RA125		60 80 100 125			
18	SF-RA300 SF-A84 D		300 40			
19	SF LINEAR Packed sets available		120			
20	SF TIMBER SPECIAL APPLICATIONS SYNCHRONISED BIPARTING TELESCOPIC PROGRESSIVE SYNCHRONISED TELESCOPIC PROGRESSIVE		80 80 80			
22	BOXED / BLISTER PACKED SETS					
25	SV-45 SV-85				45 85	
26	SV-A40 SV-A60 SV-A80 SV-A40 F SV-A60 F SV-A80 F LARGE LARGE FIX + SOFTBRAKE				40 60 80	
27	SV-A100 SV-A125 SV-A100 F SV-A125 F				100 125	
28	SV-A200 SV-A200 F SV-A300				200 300	
29	SV-X80 + SOFTBRAKE				80	
30	SV-LINEAR Packed sets available				120	
31	SV GLASS SPECIAL APPLICATIONS SYNCHRONISED BIPARTING TELESCOPIC PROGRESSIVE SYNCHRONISED TELESCOPIC PROGRESSIVE				80 80 80	
32	STAINLESS STEEL TUBULAR SYSTEMS SV-I45 SV-I46 SV-I120 / SF-I120 SV-I120 TERRA					45 120 120
33	LIFESPACES					

Another way to understand **SPACE**

More than **40 years** experience sliding door systems

Distribution in more than **30 countries**

In excess of **3,000 customers**

Group turnover over **£ 12 million per annum**

More than **1,500 products** in the full product catalogues

15 Internationally recognised patents

And during the last 12 months:

In excess of **450,000 accessory sets** supplied

In excess of **2,800 kilometres of tracks** manufactured and distributed (equivalent to the distance from Barcelona to Moscow)

FURNITURE

TIMBER

INDUSTRIAL

GLASS

STAINLESS STEEL



1/2 Aluminium framed systems

3 Straight sliding systems

People and their lifestyles evolve. Everything around them also changes, including their living space, which must adapt to the new ways of living and working, to compliment people's daily needs and preferences...

We in Saheco are aware that this happens and, for this reason, we understand spaces as ecosystems which evolve and are transformed in harmony with the people who live in them. Consequently, we design and develop systems for sliding doors which are adapted to people's lifestyles and can be integrated into their spaces.

EXPERIENCE: We have a long and far reaching history in the industry. We have been manufacturing sliding door gear systems for more than 40 years.

SPECIALISTS: We make systems for all kinds of sliding doors.

MARKETING: We travel all over the world and sell our products in dozens of countries to thousands of customers.

INNOVATORS: Saheco products are designed to satisfy the consumers' present and future needs.

THESE AND OTHER FACTORS HAVE MADE SAHECO MARKET LEADERS
Leaders in the design, manufacture and distribution of top quality sliding, sliding folding and sliding stacking systems.



4

4 Sliding stacking systems

5 Straight sliding systems

6 Low headroom systems



5



6

SF-16 SF-26



Application. High quality *top hung* sliding door gear systems for *straight sliding* timber doors for domestic or light duty commercial furniture with concealed fittings.

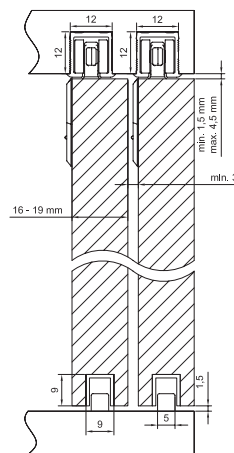
Features. Minimalist aluminium top track ribbed for ease of fitting and recessed into cupboard top and therefore concealed.
Top and bottom tracks common to both systems for ease of stock holding.
Top hangers fixed to back face of cupboard door via boss type housings and therefore concealed.
Vertical adjustment +/- 3mm and an eccentric clear threshold bottom guide.

TOP HUNG STRAIGHT SLIDING

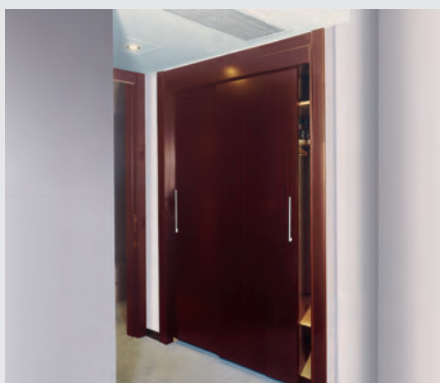
16kg 26kg



Code	Length	Description
00 16 23	2 m	Top track. Anodised aluminium SAA
00 16 33	3 m	
00 16 53	5 m	
00 16 05		SF-16. Single door complete fitting set
00 26 05		SF-26. Single door complete fitting set
00 16 24	2 m	Bottom guide insert. Plastic. Black
00 16 34	3 m	
00 16 54	5 m	



SF-20 SF-30 SF-33 SF-53 SOFTBRAKE



Application. High quality *top hung* sliding door gear systems for *straight sliding* timber doors; offering excellent value for money for domestic or light / medium duty commercial furniture. **Now available with softclose feature.**

Features. Aluminium or steel top tracks common to all four systems for ease of stock holding. Available in single or double profiles.

Top hangers can either be mortised flush or face fixed to back of the door. Hangers either with ball race (SF-30 / SF-53) or needle point (SF-20 / SF-33) bearings to provide a smooth and quiet sliding action.
Vertical adjustment +/- 6mm via three fixings for the top hanger plate.
Concealed top track stopper / retainer.

Clear threshold bottom guides

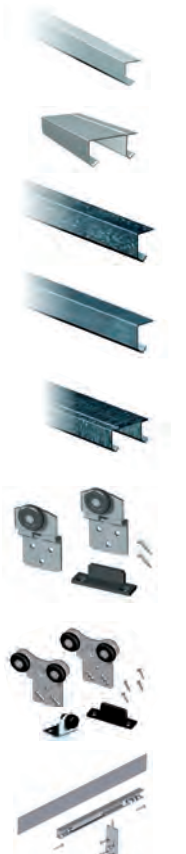
Softclose feature now available for all four systems enhancing the sliding action and ensuring that the door either fully closes or fully opens or both gently and safely.

TOP HUNG STRAIGHT SLIDING SOFTBRAKE

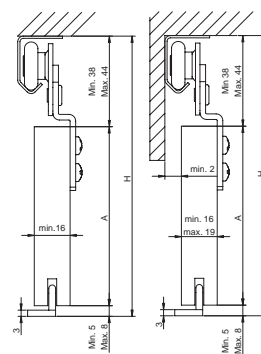
20 kg 50 kg 30 kg



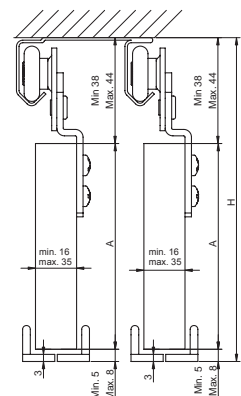
SOFTBRAKE Gentle braking system



Code	Length	Description	Weight
00 33 20	2 m	Single top track. Aluminium. Not anodised	
00 33 30	3 m		
00 33 50	5 m		
00 32 20	2 m	Double top track. Aluminium. Not anodised	
00 32 30	3 m		
00 32 50	5 m		
00 20 20	2 m	Single top track. Galvanised steel	
00 20 25	2,5 m		
00 20 30	3 m		
00 20 40	4 m		
00 20 50	5 m		
00 30 20	2 m	Single top track. Zinc plated steel	
00 30 30	3 m		
00 30 50	5 m		
00 21 20	2 m	Double top track. Galvanised steel	
00 21 25	2,5 m		
00 21 30	3 m		
00 21 40	4 m		
00 21 50	5 m		
00 20 00		SF-20. Single door complete fitting set	20 kg
00 30 00		SF-30. Single door complete fitting set.	30 kg
00 33 00		SF-33. Single door complete fitting set	30 kg
00 53 00		SF-53. Single door complete fitting set	50 kg
00 67 53		SF-20/30/33/53 Softbrake	



A. max = H-43
A. min = H-52



A. max = H-43
A. min = H-52

SF-25



Application. High quality *bottom rolling* sliding door gear system for *straight sliding* timber doors; for domestic or light / medium duty commercial furniture.

Features. Identical top and bottom tracks for ease of stock holding.

Top track raised with either push fit or face fixed profiles for ease of installation.

Top guides and bottom rollers mortised into the back face of the door so concealed when fitted.

Top guides spring loaded for ease of door installation or removal.

Bottom rollers with vertical adjustment +/- 3mm. Allows for quick and easy adjustment with the door in the installed position.

Braking plate to hold door(s) in fully closed position.

Top guides either standard or reinforced for high use commercial applications.

BOTTOM ROLLING STRAIGHT SLIDING SURFACE FIXED TRACKS

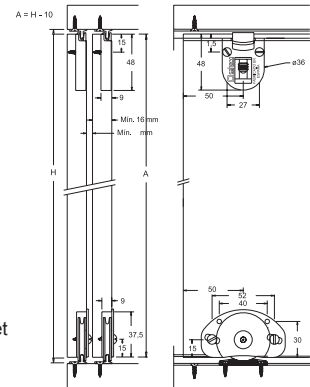
25 kg

Packed sets available

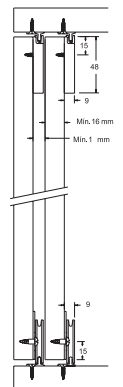


Code	Length	Description
00 25 20	2 m	Top/bottom track. Face fixed. Anodised aluminium GAA
00 25 30	3 m	
00 25 50	5 m	
00 25 21	2 m	Top/bottom track. Face fixed. Anodised aluminium. Black
00 25 31	3 m	
00 25 51	5 m	
00 25 22	2 m	Top/bottom track. Face fixed. Anodised aluminium SAA
00 25 32	3 m	
00 25 52	5 m	
00 25 00		SF-25 Single door complete fitting set - standard top guides
00 25 01		SF-25 Single door complete fitting set - reinforced top guides

Recessed Installation



Raised installation



SF-51



Application. High quality *bottom rolling* sliding door gear system for *straight sliding* timber doors; for domestic or medium / heavy duty commercial furniture.

Features. Identical top and bottom tracks for ease of stock holding.

Top tracks raised with either push fit or face fixed profiles for ease of installation.

Top guides and bottom rollers mortised into the back face of the door so concealed when fitted

Top guides spring loaded for ease of door installation or removal.

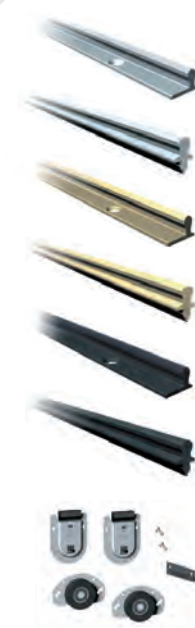
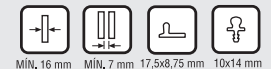
Bottom rollers c/w ball bearings and with vertical adjustment +/-3mm with roller in installed position.

Braking plate to hold door(s) in fully closed position.

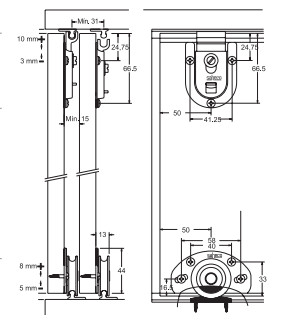
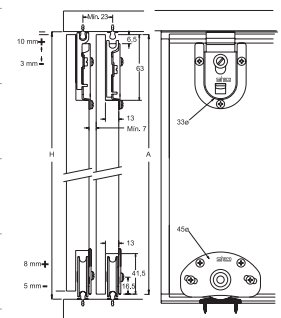
BOTTOM ROLLING STRAIGHT SLIDING SURFACE FIXED TRACKS

50 kg

Packed sets available



Code	Length	Description
00 51 22	2 m	Top/bottom track. Face fixed. Anodised aluminium. SAA
00 51 32	3 m	
00 51 52	5 m	
00 52 22	2 m	Top/bottom track. Push fixed. Anodised aluminium. SAA
00 52 32	3 m	
00 52 52	5 m	
00 51 20	2 m	Top/bottom track. Face fixed. Anodised aluminium. GAA
00 51 30	3 m	
00 51 50	5 m	
00 52 20	2 m	Top/bottom track. Push fixed. Anodised aluminium. GAA
00 52 30	3 m	
00 52 50	5 m	
00 51 21	2 m	Top/bottom track. Face fixed. Anodised aluminium. Black
00 51 31	3 m	
00 51 51	5 m	
00 52 21	2 m	Top/bottom track. Push fixed. Anodised aluminium. Black
00 52 31	3 m	
00 52 51	5 m	
00 51 00		SF-51 Single door complete fitting set



SF-22

SF-24

BOTTOM ROLLING STRAIGHT SLIDING RECESSED TRACKS

22 kg 24 kg

Packed sets available



Application. High quality *bottom rolling* sliding door gear system with concealed fittings for *straight sliding* timber doors; for domestic or light duty commercial furniture.

Features. Identical top and bottom tracks for ease of stock holding – ribbed for ease of fitting and available in a variety of finishes to suit different furniture finishes.

Concealed when fitted.

Top guides and bottom rollers mortised into the back face of the door so concealed when fitted.
Top guide spring loaded for ease of door installation or removal.

Vertical adjustment +/- 2mm via patented adjustment mechanism on bottom rollers; allows for quick and easy adjustment with the door in the installed position.

Braking plate to hold door(s) in fully closed position.

Code	Length	Material/Finish
00 22 20	2 m	Top/bottom track. Recessed. Plastic. Ivory
00 22 30	3 m	
00 22 50	5 m	
00 22 29	2 m	Top/bottom track. Recessed. Plastic. Grey
00 22 39	3 m	
00 22 59	5 m	
00 22 21	2 m	Top/bottom track. Recessed. Plastic. Walnut
00 22 31	3 m	
00 22 51	5 m	
00 22 26	2 m	Top/bottom track. Recessed. Aluminium. Not anodised
00 22 36	3 m	
00 22 56	5 m	
00 22 27	2 m	Top/bottom track. Recessed. Anodised aluminium. Black
00 22 37	3 m	
00 22 57	5 m	
00 22 28	2 m	Top/bottom track. Recessed. Anodised aluminium. Copper
00 22 38	3 m	
00 22 58	5 m	
00 22 00		SF-22 Single door complete fitting set (friction bearing)
00 24 00		SF-24 Single door complete fitting set (ball bearing)

SF-42

BOTTOM ROLLING STRAIGHT SLIDING RECESSED TRACKS

42 kg

Packed sets available



Application. High quality *bottom rolling* sliding door gear system with concealed fittings for *straight sliding* timber doors; for domestic or light/medium duty commercial furniture.

Features. Identical top and bottom tracks for ease of stock holding – ribbed for ease of fitting and available in a variety of finishes.
Concealed when fitted.

Top guides and bottom rollers mortised into the back face of the door so concealed when fitted.
Top guide spring loaded for ease of door installation or removal.

Bottom rollers c/w ball bearings to provide a smooth and quiet sliding action. Also with vertical adjustment +/- 3 mm with roller in the installed position.

Top guides either standard or reinforced for high use commercial applications.

Code	Length	Material/Finish
00 22 20	2 m	Top/bottom track. Recessed. Plastic. Ivory
00 22 30	3 m	
00 22 50	5 m	
00 22 29	2 m	Top/bottom track. Recessed. Plastic. Grey
00 22 39	3 m	
00 22 59	5 m	
00 22 21	2 m	Top/bottom track. Recessed. Plastic. Walnut
00 22 31	3 m	
00 22 51	5 m	
00 22 26	2 m	Top/bottom track. Recessed. Aluminium. Not anodised
00 22 36	3 m	
00 22 56	5 m	
00 22 27	2 m	Top/bottom track. Recessed. Anodised aluminium. Black
00 22 37	3 m	
00 22 57	5 m	
00 22 28	2 m	Top/bottom track. Recessed. Anodised aluminium. Copper
00 22 38	3 m	
00 22 58	5 m	
00 38 00		SF-42 Single door complete fitting set.
00 38 01		SF-42 Single door complete fitting set (c/w reinforced top guides)

SF-S35



Application. High quality *top hung* sliding door gear system for *straight sliding* timber doors: For domestic or light/medium duty commercial furniture. Doors *fully overlay* furniture carcass.

Features. Top and bottom tracks fully concealed when doors are in the fully closed position (full overlay). Top hangers and bottom guides complete with ball bearings to provide a smooth and quiet sliding action. Vertical adjustment +/-3mm via hanger/guide bracket slot fixing holes.

TOP HUNG STRAIGHT SLIDING VORFRONT – FULLY OVERLAY DOORS

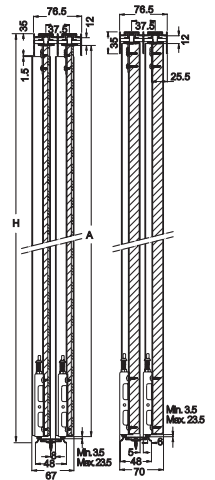
35 kg



MAX. 20 mm 55x15.5 mm 43x35 mm



Code	Length	Description
00 65 22	2 m	Double top track. Aluminium. Not anodised
00 65 32	3 m	
00 65 52	5 m	
00 65 26	2 m	Double bottom track. Aluminium. Not anodised
00 65 36	3 m	
00 65 56	5 m	
00 36 00		SF-S35. Single door complete fitting set. INNER
00 36 01		SF-S35. Single door complete fitting set. OUTER



SL-12

SL-18



Application. High quality *bottom rolling* sliding door gear system for *straight sliding* timber and / or glass panels; for domestic or light duty commercial furniture.

Features. Doors fully overlay furniture carcass. System allows for different timber and or glass panels to be installed on the same piece of furniture creating a pleasing aesthetic affect.

Identical top, bottom and middle tracks for ease of stockholding.

Anodised aluminium frame profile common to both timber and glass panels.

Spring loaded top guides for ease of door installation / removal.

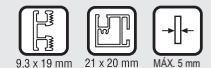
Bottom rollers with either friction bearings (SL-12) or ball bearings (SL-18) and integral vertical adjustment +/-3mm. Allows for quick and easy adjustment with the door in the installed position

Braking plate to hold the door(s) in the fully closed position.

BOTTOM ROLLING STRAIGHT SLIDING VORFRONT - FULLY OVERLAY DOORS ALUMINIUM FRAMED DOORS

12 kg

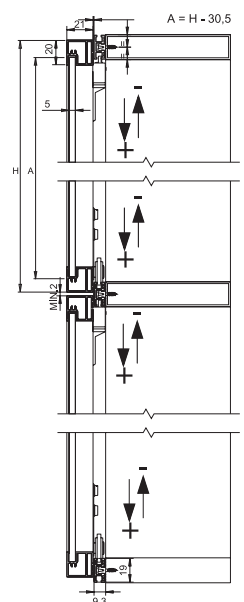
18 kg



9.3 x 19 mm 21 x 20 mm MAX. 5 mm



Code	Length	Description
00 18 20	2 m	SL-12/18 Top/Bottom/Middle track. Anodised aluminium SAA
00 18 30	3 m	
00 18 60	6 m	
00 18 25	2 m	SL-12/18 Frame profile. Anodised aluminium. SAA
00 18 35	3 m	
00 18 65	6 m	
00 12 01		SL-12 Single door complete fitting set including frame fixing brackets
00 18 01		SL-18 Single door complete fitting set including frame fixing brackets



SF-14 D

SF-20 D

TOP HUNG SLIDING FOLDING PAIRS OF DOORS ONLY

7 kg per panel

Packed sets available



MIN. 18 mm MAX. 500 mm 25x14 mm 25x12 mm

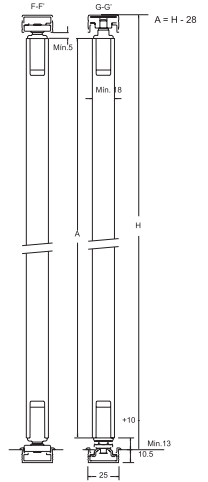


Application. High quality *top hung* sliding door gear system for *sliding folding* timber doors. For domestic or light duty commercial furniture. Pairs of doors ONLY.

Features. Top and bottom tracks in anodised aluminium common to both systems for ease of stockholding. Can be fully recessed or surface fixed. First panel pivoted as opposed to hinged to carcass side allowing for EQUAL WIDTH panels. All fittings c/w tubular housings to allow for ease of fixing. Single drilled hole required ONLY Hangers' c/w ball bearings to provide a smooth and quiet sliding folding action. Also adjustable to allow for ease of installation. Supplied c/w asymmetric hinges to allow greater fold back action to allow maximum access to furniture. Top / bottom track stoppers c/w springs to allow a cushioned and smooth closing action.



Code	Length	Description
00 14 36	3,60 m	Top track. Aluminium. Not anodised
00 14 37		Top track. Anodised aluminium. GAA
00 14 00		SF-14D. Complete fitting set for a PAIR of doors.
00 21 00		SF-20D. Complete fitting set for a PAIR of doors.
00 21 36	3,60 m	Bottom track. Aluminium. Not anodised
00 21 37		Bottom track. Anodised aluminium. GAA



SF-50 D

SF-60 D

TOP HUNG SLIDING FOLDING VORFRONT - FULLY OVERLAY DOORS PAIRS OF DOORS ONLY

25 kg per panel

30 kg per panel



MIN. 16 mm MAX. 600 mm 22x22,5 mm



Application. High quality *top hung* sliding door gear system for sliding folding timber doors; For domestic or medium / *heavy duty* commercial furniture.

Doors *fully overlay* furniture carcass. For pairs of doors ONLY.

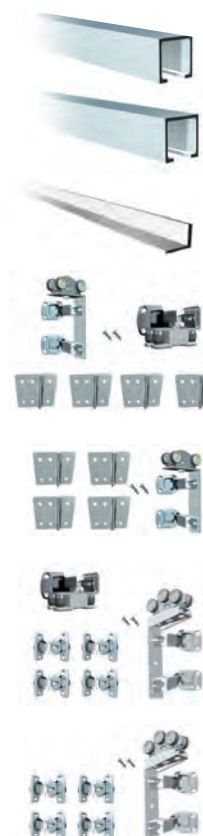
Features. High quality aluminium top and bottom tracks common to both systems for ease of stockholding.

Top and bottom tracks fully concealed when doors are in the fully closed position (full overlay).

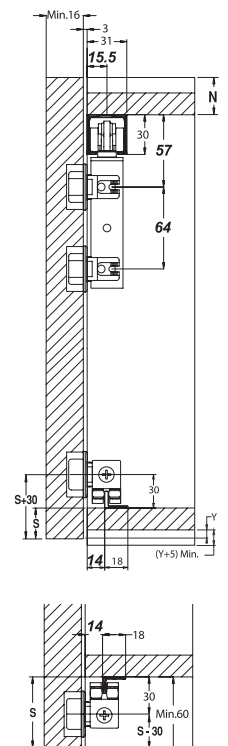
Installation possible either with or without bottom guide track to offer flexibility of design.

Top hangers and bottom guides complete with ball bearings to provide a smooth and quiet sliding folding action.

Supplied complete with asymmetric hinges to facilitate greater fold back action to allow maximum access to the interior of the furniture.



Code	Length	Description	
00 65 20	2 m	Top track not anodised	
00 65 30			Top track. Anodised aluminium. SAA
00 65 50			
00 65 21	2 m		
00 65 31		3 m	
00 65 51			5 m
00 50 00	SF-50D Complete fitting set for a PAIR of doors c/w bottom guides		
00 50 01	SF-50D Complete fitting set for a PAIR of doors without bottom guides		
00 65 05	SF-60D Complete fitting set for a PAIR of doors c/w bottom guides		
00 65 06	SF-60D Complete fitting set for a PAIR of doors without bottom guides		



SL

45 NEW

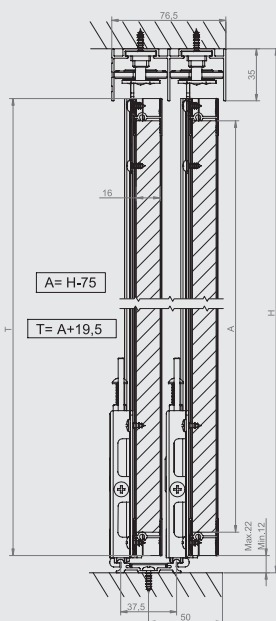
FURNITURE
TIMBER
INDUSTRIAL
GLASS
STAINLESS STEEL



SL-45 NEW

Application. Saheco is offering new finishes and additional options allowing it to provide sliding door models for more competitive, high-quality cupboards.

Features. vertical adjustment system, aluminium frames capable of supporting up to 45 kg per panel, with varied finishes for top tracks, handles and H profiles (Japanese): matt silver, matt gold, laminated wood (beech, oak, cherry), white lacquer and melamine (beech, oak, cherry and wenge). Applicable for thicknesses: 10, 16 and 18 mm. Additional options: anti-derailing system, transparent rubber joints (2-4 and 6 mm), fixing brackets for the frame, possibility of installing Softbrake (shock absorbing brake).



SLIDING DOORS BOTTOM BEARING

45 kg



SOFTBRAKE
Gentle braking
system

Packed sets
available



KIT A

10 mm Cod. 94524
16 mm Cod. 94525
18 mm Cod. 94526 (without H profile)

EQUIPMENT 1 SLIDING PANEL 1 M MAXI:
HANDLE + HORIZONTAL TRACK FRAME +
COMPLETE SET OF ACCESSORIES (Silver finishing)



Handle
Quantity 2 (2,6 mm)

Horizontal track frame
Quantity 1 (2 m)

Brush seal for handle
Quantity 5 m

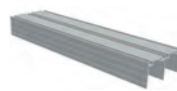


Complete set of accessories
with anti-derailing device

KIT B

2 m Cod. 94521
3 m Cod. 94531

HORIZONTAL TRACKS
NOTE Order KIT A (handles) separately



Top track.
Anodised aluminium. SAA
Quantity 1



Bottom track.
Anodised aluminium. SAA
Quantity 1

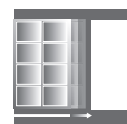


Trim cover.
Anodised aluminium. SAA
Quantity 1

KIT C

Cod. 94575

SOFTBRAKE (OPTIONAL)
NOTE This product is to complete kits A and B



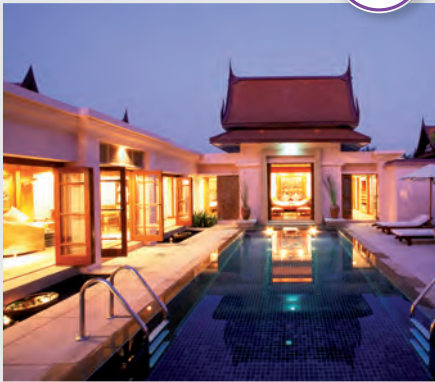
SOFTBRAKE
Gentle braking system

KIT D

10 mm Cod. 94527
16 mm Cod. 94528

HORIZONTAL TRACKS
"JAPANESE" SEPARATION

SF-I150 D



Application. High quality *sliding folding* door gear system for external timber door applications. All stainless steel fittings providing resistance to corrosion and capable of supporting individual door weights up to 75Kgs. Ideal for patio door applications on balconies, roof terraces, conservatories, home extensions, etc.

Features. Top quality heavy duty box section anodised aluminium top track to provide strength and smoothness of operation.

First panel is pivoted as opposed to hinged to allow for equal width panels.

Top hangers and bottom guides incorporated into hinges to allow for a rebated head and sill facility. This enables the doors to achieve a compression seal at the head and sill thereby providing effective weather and draught sealing.

All metal components in the pivots, top hangers, bottom guides and hinges in high quality stainless steel to provide maximum strength and weather resistance.

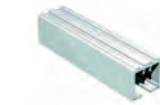
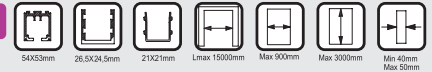
Top hangers complete with ball bearings to ensure a smooth and quiet sliding folding action. Handle available incorporated into middle hinge. In full stainless steel.

Bottom guide channel available in aluminium for floor installation and plastic for installation in timber sill profile.

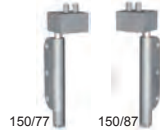
Can accommodate odd and even numbers of panels up to a maximum of eight panels sliding and folding in each direction. Hence opening widths up to 14.4 metres can be accommodated.

TOP HUNG SLIDING FOLDING EXTERNAL

75 kg per panel



Code	Length	Description
0 301 30	3 m	Top track. Anodised aluminium. SAA
0 301 45	4,5 m	
0 301 60	6 m	



0 150 77	Top pivot. Left hand. SSS
0 150 87	Top pivot. Right hand. SSS



0 150 73	Trolley hanger. Centre c/w full hinge. SSS
----------	--



0 150 71	Trolley hanger. End Left hand. c/w half hinge. SSS
0 150 81	Trolley hanger. End Right hand. c/w half hinge. SSS



0 150 78	Bottom pivot. Left hand. SSS
0 150 88	Bottom pivot. Right hand. SSS



0 150 76	Bottom guide. Centre c/w full hinge. SSS
----------	--



0 150 74	Bottom guide. End. Left hand. c/w half hinge. SSS
0 150 84	Bottom guide. End. Right hand. c/w half hinge. SSS



0 150 70	Centre hinge. SSS
----------	-------------------



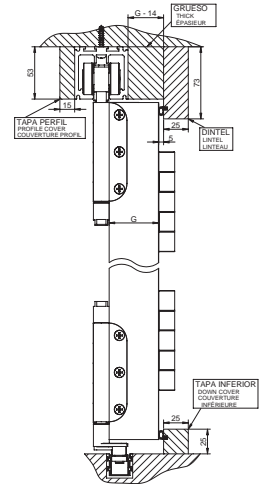
0 150 72	Centre hinge c/w handle. SSS
----------	------------------------------



0 150 30	3 m	Bottom guide channel. Aluminium. Not anodised.
----------	-----	--



0 151 30	3 m	Bottom guide channel. Plastic.
----------	-----	--------------------------------

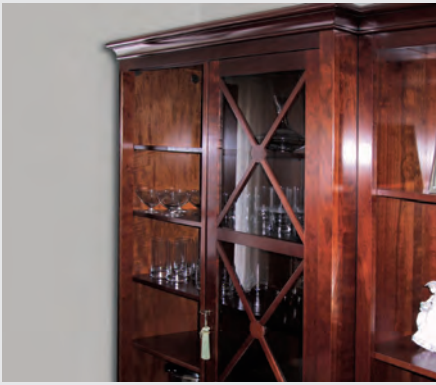


SF-70

SF-150

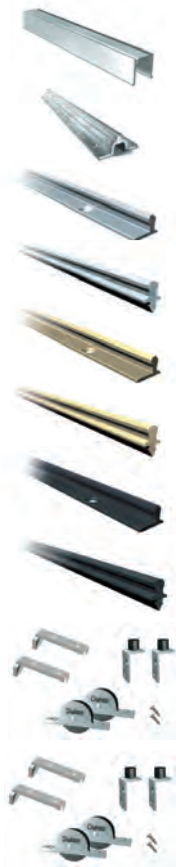
BOTTOM ROLLING STRAIGHT SLIDING

70 kg 150 kg

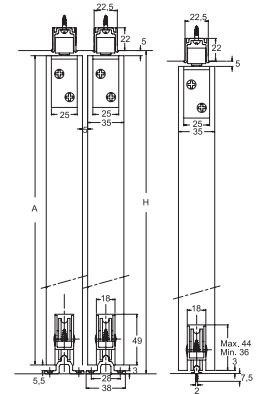


Application. High quality *bottom rolling* sliding door gear systems for *straight sliding* timber doors; offering exceptional value for money for domestic or medium / heavy duty timber partitions. Ideal for patio door applications.

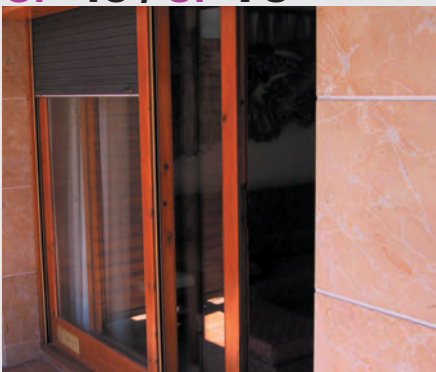
Features. Top guide channel and bottom support track common to SF-70 and SF-150 systems for ease of stock holding. Top guide channel recessed and therefore concealed when fitted. Bottom support tracks either push fit or face fixed for ease of installation. Range of finishes available. Top guide rollers c/w ball bearings common to SF-70 and SF-150 systems for ease of stock holding. Bottom rollers mortised so concealed when fitted and c/w ball bearings for a quiet and smooth sliding action.



Code	Length	Material/Finish
00 41 31	3 m	Top guide track. Aluminium.
00 41 51	5 m	Not anodised.
00 50 30	3 m	Bottom support track. Face fixed. Aluminium. Not anodised.
00 51 22	2 m	Bottom support track. Face fixed. Anodised aluminium. SAA
00 51 32	3 m	
00 51 52	5 m	
00 52 22	2 m	Bottom support track. Push fixed. Anodised aluminium. SAA
00 52 32	3 m	
00 52 52	5 m	
00 51 20	2 m	Bottom support track. Face fixed. Anodised aluminium. GAA
00 51 30	3 m	
00 51 50	5 m	
00 52 20	2 m	Bottom support track. Push fixed. Anodised aluminium. GAA
00 52 30	3 m	
00 52 50	5 m	
00 51 21	2 m	Bottom support track. Face fixed. Anodised aluminium. Black
00 51 31	3 m	
00 51 51	5 m	
00 52 21	2 m	Bottom support track. Push fixed. Anodised aluminium. Black
00 52 31	3 m	
00 52 51	5 m	
00 71 00		SF-70. Single door complete fitting set
0 150 00		SF-150. Single door complete fitting set



SF-35 / SF-65 SF-40 / SF-75



Application. Good quality low cost top hung sliding door gear systems for straight sliding timber doors. Offering excellent value for money for domestic, medium or heavy duty commercial and light or medium duty industrial applications.

Features. Top tracks common for all four systems for ease of stock holding.

Top tracks available in steel either galvanised or zinc plated (particularly suitable for industrial applications) or aluminium (particularly suitable for domestic and commercial applications).

Top hangers with patented roller skate mechanism (single roller SF-35 and SF-40 or double rollers SF-65 and SF-75) c/w either needle bearings (SF-35 and SF-65) or ball bearings (SF-40 and SF-75). Vertical adjustment +/-10mm plus lateral adjustment.

Double concealed track stoppers and clear threshold bottom guide as standard. Optional full width bottom guide channel and bottom guide rollers particularly applicable for industrial applications.

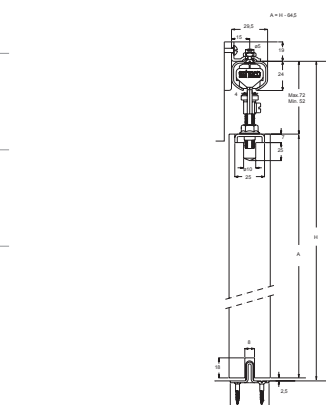
TOP HUNG STRAIGHT SLIDING

35/65 kg 40/75 kg



Code	Length	Material/Finish
00 40 15	1,5 m	Top track. Steel. Galvanised.
00 40 20	2 m	
00 40 25	2,5 m	
00 40 30	3 m	
00 40 40	4 m	
00 40 50	5 m	
00 75 15	1,5 m	Top track. Steel. Zinc plated.
00 75 20	2 m	
00 75 30	3 m	
00 75 50	5 m	
00 45 20	2 m	Top track. Aluminium. Not anodised.
00 45 30	3 m	
00 45 50	5 m	
00 35 00		SF-35 Single door complete fitting set
00 40 00		SF-40 Single door complete fitting set
00 70 00		SF-65 Single door complete fitting set
00 75 00		SF-75 Single door complete fitting set

Code	Length	Material/Finish
00 41 10		Bottom guide roller c/w recessed mounting plate.
00 41 40		Bottom guide roller c/w face fixed mounting plate.
00 41 31	3 m	Bottom guide channel. Aluminium. Not anodised.
00 41 51	5 m	
00 41 30	3 m	Bottom guide channel. Steel. Galvanised.
00 41 50	5 m	



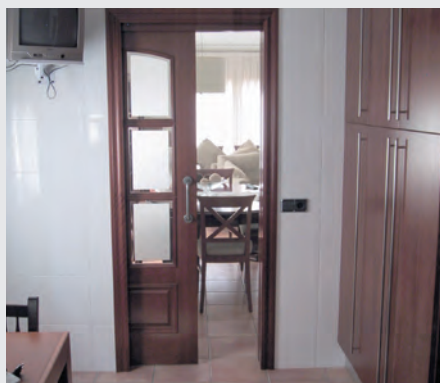
SF-E40 SF-E75

TOP HUNG STRAIGHT SLIDING

40 kg

75 kg

Packed sets
 available



Application. Quality budget *top hung* sliding door gear systems for *straight sliding* timber doors; offering exceptional value for money for domestic or light / medium duty timber partitions. An excellent alternative to traditional UK manufactured systems based on ball bearings within a captive half section top track.

Features. Good quality box section anodised aluminium top track.

Top track common to both systems for ease of stockholding.

Optional clip on anodised aluminium pelmet cover to conceal top track and fittings.

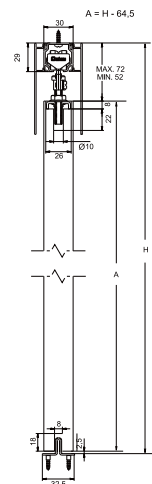
Alternative clip on brackets for mounting a timber pelmet cover (not supplied).

Top hangers with patented roller skate mechanism (single SF E40 or double SF E75 rollers) c/w ball bearings. Vertical adjustment +/- 10mm plus lateral adjustment.

Double concealed top track stoppers / retainers and clear threshold concealed bottom guide.



Code	Length	Description
00 60 20(1)	2 m	Top track. Anodised aluminium. SAA (1)
00 60 30(1)	3 m	
00 60 50(1)	5 m	
00 61 20(2)	2 m	Top track. Aluminium. Not anodised (2)
00 61 30(2)	3 m	
00 61 50(2)	5 m	
SF-E40		
00 39 00		SF-E40. Single door complete fitting set
SF-E75		
00 75 01		SF-E75. Single door complete fitting set
OPTIONAL		
00 64 23	2 m	Clip on pelmet cover. Anodised aluminium. SAA
00 64 33	3 m	
00 64 53	5 m	
00 62 22		Full width side fixing profile. Anodised aluminium. SAA
00 62 32		
00 62 52		
00 60 54		Top track side fixing bracket
00 60 56		Clip on bracket for timber pelmet covers (not supplied)
00 80 57		Top track end cap



VISIT OUR WEBSITE

www.saheco.com



SF-A61 / SF-A81 + Softbrake

Application. High quality *top hung* sliding door gear systems for *straight sliding* timber doors; combining a high quality sliding action with exceptional value for money. For domestic or light / medium duty timber partitions. **Softbrake option available.**

Features. Good quality box section anodised aluminium top tracks. Top tracks common to both systems for ease of stockholding. EXCELLENCE top track for use with EXCELLENCE softbrake set. Optional clip on anodised aluminium pelmet cover to conceal top track and fittings. Alternative clip on brackets for mounting a timber pelmet cover (not supplied). Optional full width side fixing profile in anodised aluminium to provide a neat and aesthetically pleasing side fixing solution. Optional top track for false ceiling applications in anodised aluminium. Top hangers with high quality double rollers c/w ball bearings and elastic function to ensure an exceptionally smooth and quiet sliding action. Vertical adjustment +/- 5mm. Top hanger brackets either face fixed or mortised Double concealed top track stoppers (single retainer) and clear threshold concealed bottom guide.

Softbrake

Application. High quality *soft close braking* mechanism for *top hung straight* sliding timber doors. For domestic or light / medium duty commercial timber partitions and *pocket door applications*.

Features. Suitable for use with almost all *top hung straight sliding* door gear systems for timber panels and pocket doors which utilise a box section top track. EXCELLENCE softbrake set suitable for EXCELLENCE top track ONLY. UNIVERSAL softbrake set suitable for NONE SAHECO systems. A patented two stage mechanism; firstly a piston gently slows and stops the sliding door then the closing mechanism gently and quietly pulls the door into the fully closed or open or both position(s). The mechanism acts only on the last 100mm of the doors travel, thereby protecting the edge of the door from striking the frame jamb on either or both the opening and closing cycles. Available as a stand alone product which can be fitted to virtually any standard straight sliding door system (including being retrofitted to existing applications) or in complete sets which comprise the top track, single door fitting set and either *one or two* softbrake mechanisms. The *single* softbrake set brakes the door on *either* the opening or closing cycle, whilst the double softbrake set brakes the door on *both* the opening and closing cycles.

TOP HUNG STRAIGHT SLIDING SOFTBRAKE

60 kg
 80 kg



SOFTBRAKE
 Gentle braking
 system

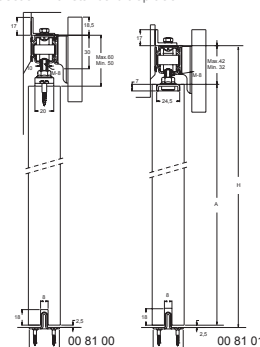
Packed sets
 available



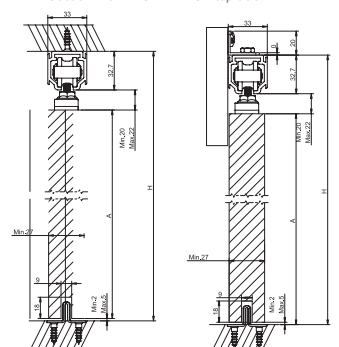
Code	Length	Description
00 60 20(1)	2 m	Top track. Anodised aluminium. SAA (1)
00 60 30(1)	3 m	
00 60 50(1)	5 m	
00 61 20(2)	2 m	Top track. Aluminium. Not anodised (2)
00 61 30(2)	3 m	
00 61 50(2)	5 m	
0 105 20	2 m	Top track Aluminium anodised EXCELLENCE
0 105 30	3 m	
0 105 50	5 m	
00 62 21	2 m	Top track for tiled ceilings. Anodised aluminium. SAA
00 62 31	3 m	
00 62 51	5 m	
00 61 00		SF-A61 Single door complete fitting set (surface mounted hanger brackets)
00 81 00		SF-A81 Single door complete fitting set (surface mounted hanger brackets)
00 61 01		SF-A61 Single door complete fitting set (morticed hanger brackets)

Code	Length	Description
00 81 01		SF-A81 Single door complete fitting set (morticed hanger brackets)
OPTIONAL		
00 62 22	2 m	Full width side fixing profile. Anodised aluminium. SAA
00 62 32	3 m	
00 62 52	5 m	
00 64 23	2 m	Clip on pelmet cover. Anodised aluminium. SAA
00 64 33	3 m	
00 64 53	5 m	
00 60 54		Top track side fixing bracket
00 60 56		Clip on bracket for timber pelmet covers (not supplied)
00 80 57		Top track end cap
SOFTBRAKES		
00 67 82		Single softbrake complete set - for use with EXCELLENCE top track ONLY
00 67 58		Single softbrake complete set - UNIVERSAL

Section with standard top track



Section with EXCELLENCE top track

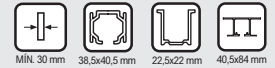


SF-A100

SF-A125

TOP HUNG STRAIGHT SLIDING

100 kg 125 kg



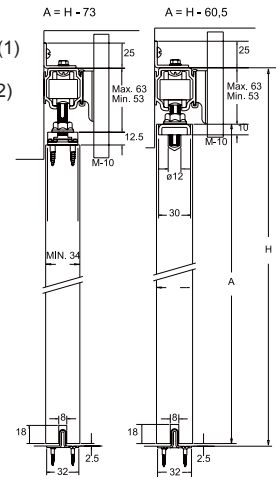
Application. High quality *top hung* sliding door gear systems for *straight sliding* timber doors; For domestic or medium / heavy duty commercial timber partitions.

Features. Good quality box section anodised aluminium top track common to both systems for ease of stock holding.

Optional top track for false ceiling applications in anodised aluminium. Top hangers c/w ball bearings and hard wearing plastic rollers to support heavy doors and provide a smooth and quiet sliding action. Vertical adjustment +/- 5mm. Top hanger brackets face fixed. Double concealed top track stoppers (single retainer) and clear threshold concealed bottom guide. Optional full width aluminium bottom guide channel and bottom rollers for wider panels.



Code	Length	Description
0 125 20 (1)	2 m	Top track. Anodised aluminium. SAA (1)
0 125 30 (1)	3 m	
0 125 50 (1)	5 m	
0 125 21 (2)	2 m	Top track. Aluminium. Not anodised (2)
0 125 31 (2)	3 m	
0 125 22	2 m	Top track. For tiled ceilings. Anodised aluminium. SAA
0 125 32	3 m	
0 125 52	5 m	
OPTIONAL		
0 104 23	2 m	Clip on pelmet cover. Anodised aluminium. SAA
0 104 33	3 m	
0 104 53	5 m	
00 41 31	3 m	Bottom guide channel. Aluminium. Not anodised
00 41 51	5 m	
00 41 10		Bottom guide roller c/w recessed mounting plate
00 41 40		Bottom guide roller c/w face fixed mounting plate
0 125 57		Top track end cap
00 60 56		Clip on bracket for timber pelmet covers (not supplied)



SF-A300

TOP HUNG STRAIGHT SLIDING

300 kg



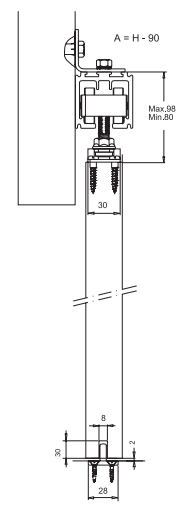
Application. High quality *top hung* sliding door gear system for *straight sliding* timber doors. For domestic or *very* heavy duty commercial timber partitions.

Features. Good quality heavy duty box section anodised aluminium top track. Top hangers c/w ball bearings and hard wearing plastic rollers to support very heavy doors and provide a smooth and quiet sliding action. Vertical adjustment +/- 9mm.

Double concealed top track stoppers and retainers and clear threshold concealed bottom guide. Optional full width aluminium bottom guide channel and bottom rollers for wider panels.

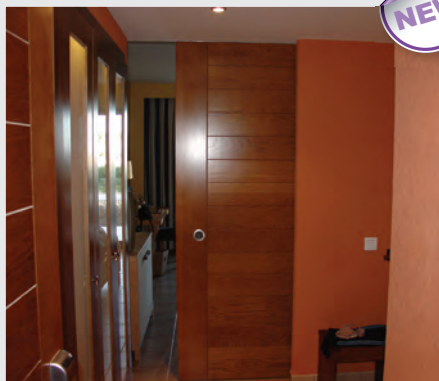


Code	Length	Description
0 301 30	3 m	Top track. Anodised aluminium. SAA
0 301 45	4,5 m	
0 301 60	6 m	
0 300 00		SF-A300 Single door complete fitting set.
OPTIONAL		
00 41 31	3 m	Bottom guide channel. Aluminium. Not anodised
00 41 51	5 m	
00 41 10		Bottom guide roller c/w recessed mounting plate
00 41 40		Bottom guide roller c/w face fixed mounting plate
0 300 57		Top track end cap



SF-RA60 SF-RA80 + Softbrake

NEW



Application. High quality *top hung* sliding door gear system for *straight sliding* timber doors.
Low headroom system to produce an aesthetically pleasing appearance with all fittings concealed.
 For domestic or light / medium duty commercial partitions.
Now available with softbrake feature

Features. Tracks common to both systems for ease of stockholding. Same track for both systems. Optional full width side fixing profile in anodised aluminium to provide a neat and aesthetically pleasing side fixing solution. Optional top track for false ceiling applications in anodised aluminium. Top hangers with high quality double rollers c/w ball bearings and elastic function to ensure an exceptionally smooth and quiet sliding action. Hanger brackets fully concealed in top edge of the panel c/w vertical adjustment mechanism (+/-5mm) that allows height to be adjusted with the panel installed. Minimal gap 2mm between top of door and underside of top track when installed.

Softbrake. Patented soft closing mechanism. Fully concealed within top track to enhance aesthetic appearance. Mechanism incorporated into top roller. Single (minimum door width 650mm) and double (minimum door width 850mm) applications possible.

TOP HUNG STRAIGHT SLIDING LOW HEADROOM SOFTBRAKE

60 kg 80 kg



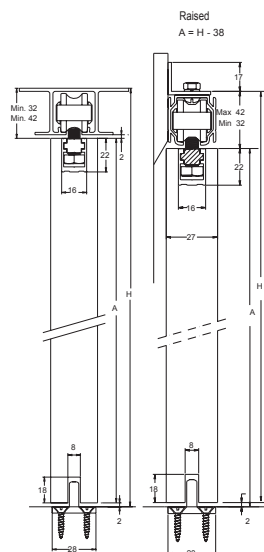
SOFTBRAKE
 Gentle braking system



42,5 x 32,5 mm MIN. 25 mm 30x29 mm 43,5x37 mm 70x30 mm



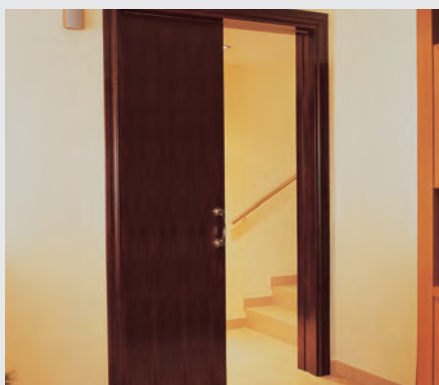
Code	Length	Description
00 60 20	2 m	Top track. Anodised aluminium. SAA
00 60 30	3 m	
00 60 50	5 m	
00 61 20	2 m	Top track. Aluminium. Not anodised
00 61 30	3 m	
00 61 50	5 m	
00 62 21	2 m	Top track. For tiled ceilings. Anodised aluminium. SAA
00 62 31	3 m	
00 62 51	5 m	
00 60 04		SF-RA60. Single door complete fitting set
00 80 04		SF-RA80. Single door complete fitting set
00 62 22	2 m	Full width side fixing profile. Anodised aluminium. SAA
00 62 32	3 m	
00 62 52	5 m	
00 80 23	2 m	Top track. Anodised aluminium. SAA
00 80 33	3 m	
00 80 53	5 m	
0 101 55		Top track side fixing bracket
00 80 06		SF-RA60 Top hanger incorporating softbrake mechanism
00 80 84		SF-RA60 Recessed top hanger brackets (2) - FOR SOFTBRAKE APPLICATION
00 80 80		SF-RA60 Top hanger without softbrake mechanism



For single softbrake application
 order 1 x 00 80 06 + 1 x 00 80 84
 + 1 x 00 80 80

For double softbrake application
 order 2 x 00 80 06 + 1 x 00 80 84

SF-RA100 SF-RA125



Application. High quality *top hung* sliding door gear system for *straight sliding* timber doors. **Low headroom** system to produce an aesthetically pleasing appearance with all fittings concealed. For domestic or medium / heavy duty commercial partitions.

Features. Good quality box section anodised aluminium top track. Tracks common to both systems for ease of stockholding. Optional top track for false ceiling applications in anodised aluminium. Optional full width aluminium bottom guide channel and bottom rollers for wider panels. Top hangers with high quality double rollers c/w ball bearings and elastic function to ensure an exceptionally smooth and quiet sliding action. Hanger brackets fully concealed in top edge of the panel c/w vertical adjustment mechanism (+/-5mm) that allows height to be adjusted with the panel installed. Minimal gap 2mm between top of door and underside of top track when installed. Double concealed top track stoppers and retainers and clear threshold concealed bottom guide.

TOP HUNG STRAIGHT SLIDING LOW HEADROOM

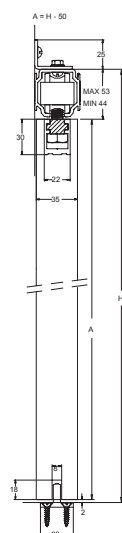
100 kg 125 kg



MIN. 35 mm 38,5x40,5 mm 40,5x64 mm



Code	Length	Description
0 125 20	2 m	Top track. Anodised aluminium. SAA
0 125 30	3 m	
0 125 50	5 m	
0 125 21	2 m	Top track. Aluminium. Not anodised
0 125 31	3 m	
0 125 51	5 m	
0 125 22	2 m	Top track. For tiled ceilings. Anodised aluminium. SAA
0 125 32	3 m	
0 125 52	5 m	
0 100 04		SF-RA100. Single door complete fitting set
0 125 04		SF-RA125. Single door complete fitting set
00 41 31	3 m	Bottom guide channel Aluminium. Not anodised
00 41 51	5 m	
00 41 10		Bottom guide roller c/w recessed mounting plate
00 41 40		Bottom guide roller c/w face fixed mounting plate



SF

SF-RA300



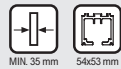
Application. High quality *top hung* sliding door gear system for *straight sliding* timber doors.
Low headroom system to produce an aesthetically pleasing appearance with all fittings concealed. For domestic or heavy / very heavy duty commercial partitions.

Features. Good quality box section anodised aluminium top track. Top hangers with high quality quadruple rollers c/w ball bearings and elastic function to ensure an exceptionally smooth and quiet sliding action. Hanger brackets fully concealed in top edge of the panel c/w vertical adjustment mechanism (+/- 5mm) that allows height to be adjusted with the panel installed. Minimal gap 2 mm between top of door and underside of top track when installed. Double concealed top track stoppers and retainers and clear threshold concealed bottom guide.

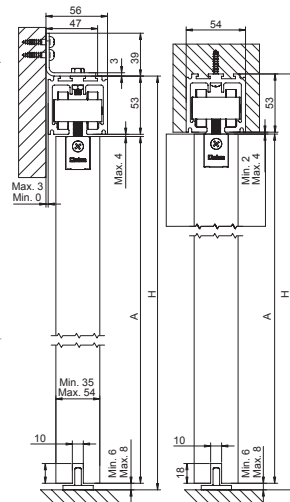
Optional. Full width aluminium bottom guide channel and bottom rollers for wider panels

TOP HUNG STRAIGHT SLIDING LOW HEADROOM

300 kg



Code	Length	Description
0 301 30	3 m	Top track. Anodised aluminium. SAA
0 301 45	4,5 m	
0 301 60	6 m	
0 300 04		SF-RA300. Single door complete fitting set
OPTIONAL		
00 41 31		Bottom guide channel. Aluminium.
00 41 51		Not anodised
00 41 10		Bottom guide roller c/w recessed mounting plate
00 41 40		Bottom guide roller c/w face fixed mounting plate
0 300 64		Top track side fixing bracket
0 300 57		Top track end cap



A max = H-61
A min = H-65

SF-A84 D

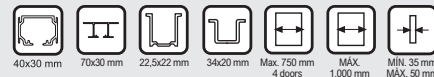


Application. High quality *top hung* sliding door gear system for *sliding folding* timber doors.
 For **EQUAL WIDTH** panels. **Low headroom** system to provide an aesthetically pleasing appearance with fittings fully concealed. For domestic or light / medium duty commercial folding partitions.

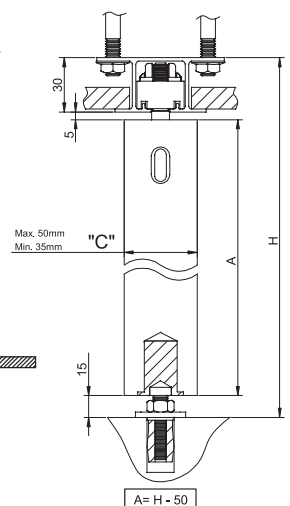
Features. Good quality box section anodised aluminium top track. Optional top track for false ceiling applications in anodised aluminium.
 Top hangers with high quality double rollers c/w ball bearings and elastic function to ensure an exceptionally smooth and quiet sliding folding action. First panel pivoted as opposed to hinged to side jamb allowing for EQUAL WIDTH panels.
 Pairs of panels – max panel width 1000mm. Bottom guide channel not necessary allowing for a clear threshold
 Four or more panels hinged together – max panel width 750mm. Bottom guide channel recommended

TOP HUNG SLIDING FOLDING LOW HEADROOM

40 kg per panel



Code	Length	Description
00 62 23	2 m	Top track. Anodised aluminium. SAA
00 62 33	3 m	
00 62 53	5 m	
00 62 21	2 m	Top track for tiled ceilings. Anodised aluminium. SAA
00 62 31	3 m	
00 62 51	5 m	
00 88 00		SF-A84D Complete fitting set for a PAIR of doors (hinges not included) Máx. 2 m
00 88 01		SF-A84D Complete fitting set for SINGLE door Máx. 3 m
00 88 02		SF-A84D Complete fitting set for SECOND PAIR of doors (hinges not included) Máx. 3 m
OPTIONAL		
00 41 31	3 m	Bottom guide channel. Aluminium.
00 41 51	5 m	Not anodised
00 41 30	3 m	Bottom guide channel. Steel. Galvanised
00 41 50	5 m	
00 88 10		Adjustable concealed hinge SAA
00 41 10		Bottom guide roller c/w recessed mounting plate
00 41 40		Bottom guide roller c/w face fixed mounting plate



Please note: Standard butt hinges (102 x 76mm) can be used as an alternative to the above concealed hinges. Not supplied.



SF LINEAR

FURNITURE
TIMBER
 INDUSTRIAL
 GLASS
 STAINLESS STEEL



NEW



SF Linear + Softbrake

Application. Top quality innovative and contemporary *top hung* sliding door gear system for *straight sliding* timber or glass panels. Combining a smooth and quiet sliding action with a new and contemporary aesthetic appearance. *Linear*, so called because the system integrates seamlessly into its surroundings, with only two lines visible. For domestic and medium / heavy duty commercial timber or glass partitions.

Features. High quality split section top track in anodised aluminium. The inner section is wall mounted while the outer section incorporates a cover plate available in a variety of finishes to completely conceal all moving parts. End caps also available in different finishes.

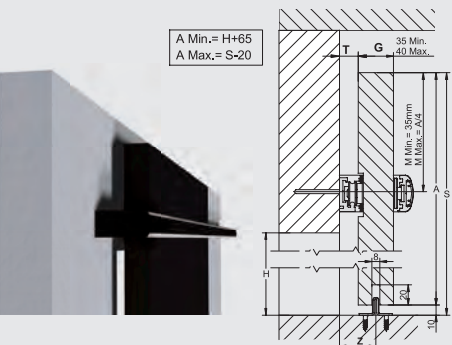
The system can accommodate a maximum door weight of 120kgs and a maximum door height of 3m, which means effectively a complete wall can slide effortlessly to one side.

Single or double soft brake is available (max door weight 80kgs) to provide a cushioning and closing action for the last 100mm of door travel either on the opening and / or closing cycles.

Unusually the top track sits across the door rather than over the top and a maximum of one quarter of the door can actually sit above the track; hence if a 3m high door is used, 500mm can sit above the top track enhancing the impression that the whole wall is moving and almost floating as the door slides.

High quality trolley hangers complete with ball race bearings to ensure a smooth and quiet sliding action. Clear threshold fully concealed bottom guide.

ALSO AVAILABLE FOR FRAMELESS GLASS PANELS SEE PAGE 30.



TOP HUNG STRAIGHT SLIDING SOFTBRAKE

120 kg



SOFTBRAKE
 Gentle braking system

Packed sets available



33.5x16 mm



36x11 mm



26.2x6.4 mm

Code	Length	Description
0 132 20	2 m	SF-Linear. Top track INNER Anodised aluminium SAA
0 132 30	3 m	
0 132 50	5 m	
0 131 20	2 m	SF-Linear. Top track OUTER Anodised aluminium SAA
0 131 30	3 m	
0 131 50	5 m	
0 130 20	2 m	SF-Linear. Top track cover plate. Anodised aluminium SAA
0 130 30	3 m	
0 130 50	5 m	
0 133 20	2 m	SF-Linear. Top track cover plate. Aluminium BLACK
0 133 30	3 m	
0 133 50	5 m	
0 134 20	2 m	SF-Linear. Top track cover plate. Aluminium WHITE
0 134 30	3 m	
0 134 50	5 m	
0 135 20	2 m	SF-Linear. Top track cover plate. Aluminium NICKEL PLATED
0 135 30	3 m	
0 135 50	5 m	
0 131 10		SF-Linear Single door complete fitting set
0 131 11		SF-Linear Single softbrake complete set (80Kgs MAX DOOR WEIGHT)
0 131 01		SF-Linear Top track end cover cap set (2) Anodised aluminium SAA
0 131 02		SF-Linear Top track end cover cap set (2) Aluminium BLACK
PACKED SETS		
90232	2 m	SF-Linear Packed set for single door 2m track NP cover caps
90233	3 m	SF-Linear Packed set for single door 3m track NP cover caps
90234	2 m	SF-Linear Packed set for single door 2m track NP cover caps c/w softbrake (1)
90235	3 m	SF-Linear Packed set for single door 3m track NP cover caps c/w softbrake (1)

SF TIMBER SPECIAL APPLICATIONS

FURNITURE
TIMBER
 INDUSTRIAL
 GLASS
 STAINLESS STEEL

SYNCHRONISED BIPARTING



Application. High quality *top hung* sliding door gear system for *straight sliding* timber doors. For domestic or light / medium duty commercial timber partitions. A *synchronised biparting* system which allows a *pair* of biparting doors to operate together.

Features. A special application which utilises the SF-A81 system (see page 13). The standard sets are complemented by an additional cable and pulley system which connects the two doors together and allows them to both open and close together, thereby complementing the high quality sliding action of the standard system with added functionality.

TOP HUNG STRAIGHT SLIDING SYNCHRONISED BIPARTING

80 kg per panel



40x30 mm



Code

00 62 23	2 m	Top track. Anodised aluminium. SAA
00 62 33	3 m	
00 62 53	5 m	

00 81 00 SF-A81 Single door complete fitting set (2 sets required)



0 101 12 Complete fitting set for a **PAIR** of synchronised biparting doors

TELESCOPIC PROGRESSIVE



Application. High quality *top hung* sliding door gear system for *straight sliding* timber doors. For domestic or light / medium duty commercial timber partitions. A *telescopic* system which allows either *two or three* doors to operate together to form a stepped partition across the opening when fully closed, and a neat stack of panels to one side of the opening when fully open.

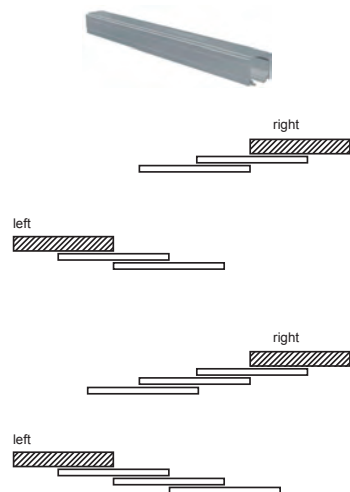
Features. A special application which utilises the SF-A81 system (see page 13). The standard sets are complemented by an additional cable and pulley system which connects the two or three doors together and allows them to both open and close together, thereby complementing the high quality sliding action of the standard system with added functionality.

TOP HUNG STRAIGHT SLIDING TELESCOPIC

80 kg per panel



40x30 mm



Code

00 62 23	2 m	Top track. Anodised aluminium. SAA
00 62 33	3 m	
00 62 53	5 m	

0 101 20 Complete fitting set for **TWO** telescopic doors. **RIGHT HAND**

0 101 19 Complete fitting set for **TWO** telescopic doors. **LEFT HAND**

0 101 22 Complete fitting set for **THREE** telescopic doors. **RIGHT HAND**

0 101 23 Complete fitting set for **THREE** telescopic doors. **LEFT HAND**

SYNCHRONISED TELESCOPIC PROGRESSIVE



Application. High quality *top hung* sliding door gear system for *straight sliding* timber doors. For domestic or light / medium duty commercial timber partitions. A *synchronised telescopic* system which combines the features of the synchronised biparting and *two door telescopic* systems shown above. A total of *four* doors are connected together forming a stepped partition across the opening when fully closed, and neat stacks of panels on both sides of the opening when fully open.

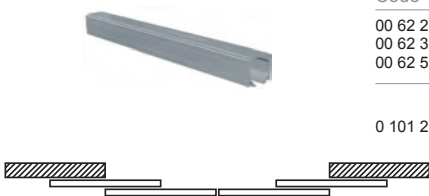
Features. A special application which utilises the SF-A81 system (see page 13). The standard sets are complemented by an additional cable and pulley system which connects the four doors together, thereby complementing the high quality sliding action of the standard system with added functionality.

TOP HUNG STRAIGHT SLIDING SYNCHRONISED TELESCOPIC

80 kg per panel



40x30 mm



Code

00 62 23	2 m	Top track. Anodised aluminium. SAA
00 62 33	3 m	
00 62 53	5 m	

0 101 21 Complete fitting set for **FOUR** synchronised telescopic doors.

saheco
mechanisms for sliding doors

SLIDING DOOR
GEAR SYSTEMS
Internal divisions and doors

SF-A81
DOUBLE SOFTRAKE
TOP HINGE STRAIGHT
SLIDING SYSTEM FOR
TIMBER PARTITIONS

SLIDING DOOR
GEAR SYSTEMS

SF-A81 + E SOFTRAKE BOXES
FOR ONE DOOR SET 20

saheco
mechanisms for sliding doors

SLIDING DOOR
GEAR SYSTEMS
Internal divisions and doors

SF-E40
TOP HINGE STRAIGHT
SLIDING SYSTEM FOR
TIMBER PARTITIONS

SLIDING DOOR
GEAR SYSTEMS

SAHECO PARTS AND ACCESSORIES

saheco
mechanisms for sliding doors

SLIDING DOOR
GEAR SYSTEMS
Furniture and cupboard doors

SF-42
BOTTOM ROLLING STRAIGHT
SLIDING SYSTEM FOR
FURNITURE APPLICATIONS

SLIDING DOOR
GEAR SYSTEMS

SF-42 BOXES FOR
THREE DOOR SET 20

BOXED packaging

www.saheco.com

SF PACKED SETS

The Saheco packed sets range are all complete sets of fittings to suit various types of straight sliding and sliding folding furniture and timber and glass partition applications. In all cases the sets contain appropriate lengths of track(s) together with the necessary number of fitting sets to suit the particular application. Supplied either blister packed or boxed as indicated in the below table



FURNITURE
TIMBER
INDUSTRIAL
GLASS
STAINLESS STEEL

SYSTEM APPLICATION	MAX DOOR WEIGHT	MAX DOOR WIDTH	DESCRIPTION	BLISTER PACKED	BOXED	PAGE No.
SF-20						
Two door set	20	750 mm	SF-20 Top hung straight sliding cupboard system. 2 door set 1.5m double track.	0 720 15		6
Two door set	20	1000 mm	SF-20 Top hung straight sliding cupboard system. 2 door set 2m double track.	0 720 20		6
One door set	20	750 mm	SF-20 Top hung straight sliding cupboard system. Single door set 1.5m single track.	0 721 15		6
One door set	20	1000 mm	SF-20 Top hung straight sliding cupboard system. Single door set 2m single track.	0 721 20		6
SF-22						
One door set	22	750 mm	SF-22 Bottom rolling straight sliding cupboard system. Single door set 1.5m tracks.	0 722 15		8
One door set	22	1000 mm	SF-22 Bottom rolling straight sliding cupboard system. Single door set 2m tracks.	0 722 20		8
SF-24						
One door set	24	750 mm	SF-24 Bottom rolling straight sliding cupboard system. Single door set 1.5m tracks.	0 724 15		8
One door set	24	1000 mm	SF-24 Bottom rolling straight sliding cupboard system. Single door set 2m tracks.	0 724 20		8
SF-25						
Two door set	25	1000 mm	SF-25 Bottom rolling straight sliding cupboad system. 2 door set 2m tracks.	0 728 21	0 925 20	7
Three door set	25	1000 mm	SF-25 Bottom rolling straight sliding cupboad system. 2 door set 2m tracks.		0 925 30	7
SF-30						
One door set	30	750 mm	SF-30 Top hung straight sliding cupboard system. Single door set 1.5m single track.	0 730 15		6
One door set	30	1000 mm	SF-30 Top hung straight sliding cupboard system. Single door set 2m single track.	0 730 20		6
Two door set	30	600 mm	SF-30 Top hung straight sliding cupboard system. 2 door set 1.2m double track.	0 731 12		6
Two door set	30	750 mm	SF-30 Top hung straight sliding cupboard system. 2 door set 1.5m double track.	0 731 15		6
Two door set	30	1000 mm	SF-30 Top hung straight sliding cupboard system. 2 door set 2m double track.	0 731 20		6
SF-51						
Two door set	50	1000 mm	SF-51 Bottom rolling straight sliding cupboard system. 2 door set 2m tracks.	0 751 21	0 951 20	7
Three door set	50	1000 mm	SF-51 Bottom rolling straight sliding cupboard system. 2 door set 3m tracks.		0 951 30	7
SF-33						
One door set	30	1000 mm	SF-33 Top hung straight sliding cupboard system. 1 door set 2m single track.	0 733 20	0 933 12	6
Two door set	30	1000 mm	SF-33 Top hung straight sliding cupboard system. 2 door set 2m double track.	0 733 21	0 933 22	6
Three door set	30	1000 mm	SF-33 Top hung straight sliding cupboard system. 3 door set 3m double track.		0 933 30	6
SF-53						
Two door set	50	1000 mm	SF-53 Top hung straight sliding cupboard system. 2 door set 2m double track.	0 754 21	0 953 20	6
Three door set	50	1000 mm	SF-53 Top hung straight sliding cupboard system. 3 door set 3m double track.		0 953 30	6

SF PACKED SETS

The Saheco packed sets range are all complete sets of fittings to suit various types of straight sliding and sliding folding furniture and timber and glass partition applications. In all cases the sets contain appropriate lengths of track(s) together with the necessary number of fitting sets to suit the particular application. Supplied either blister packed or boxed as indicated in the below table



FURNITURE
TIMBER
INDUSTRIAL
GLASS
STAINLESS STEEL

SYSTEM APPLICATION	MAX DOOR WEIGHT	MAX DOOR WIDTH	DESCRIPTION	BLISTER PACKED	BOXED	PAGE No.
SF-42						
Two door set	42	1000 mm	SF-42 Bottom rolling straight sliding cupboard system. 2 door set 2m tracks.	0 742 21	0 942 20	8
Three door set	42	1000 mm	SF-42 Bottom rolling straight sliding cupboard system. 3 door set 3m tracks.		0 942 30	8
SF-20 D						
Two door set	10	500 mm	SF-20D Top hung sliding folding cupboard system. 2 door set 1 x 1m track.	0 723 20		8
Four door set	10	500 mm	SF-20D Top hung sliding folding cupboard system. 4 door set 2 x 1m tracks.	0 723 21		8
SF-40						
One door set	40	750 mm	SF-40 Top hung straight sliding partition system. Single door set 1.5m track Aluminium.	0 740 15		13
One door set	40	1000 mm	SF-40 Top hung straight sliding partition system. Single door set 2m track Aluminium.	0 740 20		13
One door set	40	750 mm	SF-40 Top hung straight sliding partition system. Single door set 1.5m track Steel.	0 741 15		13
One door set	40	1000 mm	SF-40 Top hung straight sliding partition system. Single door set 2m track Steel.	0 741 20	0 941 22	13
SF-E40						
One door set	40	750 mm	SF-E40 Top hung straight sliding partition system. Single door set 1.5m track.		0 941 15	14
One door set	40	1000 mm	SF-E40 Top hung straight sliding partition system. Single door set 2m track.		0 941 20	14
SF-75						
One door set	75	750 mm	SF-75 Top hung straight sliding partition system. Single door set 1.5m track Aluminium.	0 775 15		13
One door set	75	1000 mm	SF-75 Top hung straight sliding partition system. Single door set 2m track Aluminium.	0 775 20		13
One door set	75	750 mm	SF-75 Top hung straight sliding partition system. Single door set 1.5m track Steel.	0 776 15		13
One door set	75	1000 mm	SF-75 Top hung straight sliding partition system. Single door set 2m track Steel.	0 776 20	0 976 22	13
SF-E75						
One door set	75	1000 mm	SF-E75 Top hung straight sliding partition system. Single door set 2m track.		0 976 20	14
SF-A61						
One door set	60	1000 mm	SF-A61 Top hung straight sliding partition system. Single door set 2m track.	0 763 20	0 963 20	14
SF-A81						
One door set	80	750 mm	SF-A81 Top hung straight sliding partition system. Single door set 1.5m track.	0 783 15	0 983 15	14
One door set	80	1000 mm	SF-A81 Top hung straight sliding partition system. Single door set 2m track.	0 783 20	0 983 22	14
SF-A81 SOFTBRAKE						
One door set	80	1000 mm	SF-A81 + Softbrake. Complete fitting set for single door. 2m track + 1 softbrake.		0 982 20	20
One door set	80	1000 mm	SF-A81 + Softbrake. Complete fitting set for single door. 2m track + 2 softbrakes.		0 983 20	20

SF PACKED SETS

The Saheco packed sets range are all complete sets of fittings to suit various types of straight sliding and sliding folding furniture and timber and glass partition applications. In all cases the sets contain appropriate lengths of track(s) together with the necessary number of fitting sets to suit the particular application. Supplied either blister packed or boxed as indicated in the below table



FURNITURE
TIMBER
 INDUSTRIAL
GLASS
 STAINLESS STEEL

SYSTEM APPLICATION	MAX DOOR WEIGHT	MAX DOOR WIDTH	DESCRIPTION	BLISTER PACKED	BOXED	PAGE No.
SF-LINEAR						
One door set	120	870 mm	SF-Linear Complete fitting set for single door 2m track NP cover caps MAX DOOR WEIGHT 120kgs		0 90 232	19
One door set	120	1370 mm	SF-Linear Complete fitting set for single door 3m track NP cover caps MAX DOOR WEIGHT 120kgs		0 90 233	19
One door set	80	870 mm	SF-Linear Complete fitting set for single door 2m track NP cover caps c/w softbrake (1) MAX DOOR WEIGHT 80kgs		0 90 234	19
One door set	80	1370 mm	SF-Linear Complete fitting set for single door 3m track NP cover caps c/w softbrake (1) MAX DOOR WEIGHT 80kgs		0 90 235	19
SV-LINEAR						
One door set	120	870 mm	SV-Linear Complete fitting set for single door 2m track NP cover caps MAX DOOR WEIGHT 120kgs		0 90 132	30
One door set	120	1370 mm	SV-Linear Complete fitting set for single door 3m track NP cover caps MAX DOOR WEIGHT 120kgs		0 90 133	30
One door set	80	870 mm	SV-Linear Complete fitting set for single door 2m track NP cover caps c/w softbrake (1) MAX DOOR WEIGHT 80kgs		0 90 134	30
One door set	80	1370 mm	SV-Linear Complete fitting set for single door 3m track NP cover caps c/w softbrake (1) MAX DOOR WEIGHT 80kgs		0 90 135	30



VISIT OUR WEBSITE

www.saheco.com

SV-45 / SV-85

TOP HUNG STRAIGHT SLIDING

45 kg

85 kg



Application. Good quality *top hung* sliding door gear systems for *straight sliding* frameless glass doors. For domestic or light / medium duty commercial applications. For *bi-passing* doors only.

Features. High quality box section *preformed double top track* in aluminium (not anodised).

Double track allows for minimal gap between bi-passing glass doors of only 16mm (10mm thick glass panels) or 18mm (8mm thick glass panels)

Optional clip on anodised aluminium pelmet cover to conceal top track and fittings.

Top hangers with high quality double rollers c/w ball bearings to ensure a smooth and quiet sliding action. Vertical adjustment +/-2mm.

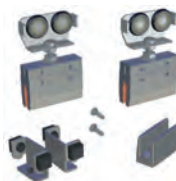
Glass clamps to connect hangers to top of glass panel. **NO DRILLING OF GLASS REQUIRED.**

Adjustable clear threshold bottom guide as standard to suit glass thickness 8mm or 10mm. Double concealed top track stoppers.



Code

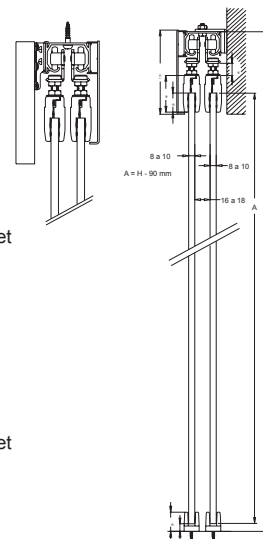
00 85 20 2 m
00 85 30 3 m
00 85 50 5 m
Top track. Aluminium not anodised



00 46 01 SV-45. Single door complete fitting set



00 96 00 SV-85. Single door complete fitting set



OPTIONAL



00 96 58 Top track side fixing bracket



00 60 61 Separator plate for fixed glass



00 66 59 Clip on bracket for timber pelmet covers (not supplied)



0 103 02 Corner cover cap Anodised aluminium SAA
0 103 03 Corner cover cap Anodised aluminium WHITE
0 103 04 Corner cover cap Anodised aluminium SSS

0 103 02 0 103 03 0 103 04



0 104 20(1) 2m Clip on pelmet cover Anodised aluminium. SAA (1)
0 104 30(1) 3m
0 104 50(1) 5m
0 104 21(2) 2m Clip on pelmet cover Anodised aluminium. WHITE (2)
0 104 31(2) 3m
0 104 51(2) 5m
0 104 22(3) 2m Clip on pelmet cover Anodised aluminium. PSS (3)
0 104 32(3) 3m

SV-A40 / A60 / A80 / A40 F / A60 F / A80 F / LARGE / LARGE FIX + Softbrake



Application. High quality top hung sliding door gear systems for straight sliding frameless glass doors. For domestic or light / medium duty commercial partitions.

Features. An extensive range of different fixing mechanisms and finishing components to provide different aesthetic affects to suit different design requirements.

SV-A40 / A60 / A80. Standard application. High quality box section anodised aluminium top track common to all three systems for ease of stockholding.

Optional clip on anodised aluminium pelmet cover to conceal top track and fittings. Optional full length side fixing profile to provide a neat and aesthetically pleasing side fixing solution.

Optional fixed panel options also available (F) via the addition of fixed panel profiles to provide either a single fixed glass panel on either side of the sliding glass panel or two fixed glass panels on both sides of the sliding glass panel, the latter creating a glass pocket for the sliding glass door.

Top hangers with high quality double rollers c/w ball bearings and elastic function to ensure an exceptionally smooth and quiet sliding action. Vertical adjustment +/-3mm.

Glass clamps to connect hangers to top of glass panel.

NO DRILLING OF GLASS REQUIRED.

Adjustable clear threshold bottom guide as standard. Optional full length aluminium bottom guide channel c/w draft / sound reducing brush strip.

Double concealed top track stoppers (single retainer)

SV-LARGE. Alternative version of SV-A40 / A60 / A80 systems utilising the same top track and glass clamp / hanger sets. **NO DRILLING OF GLASS REQUIRED.**

However full door width aluminium clip on trim profiles available in SAA / White / PSS finishes. These profiles clip directly to the glass clamps giving the appearance of a full width rail along the top of the glass door on both sides.

Screw fixed end cover caps to complete the top rail appearance for both ends of the glass door.

SV-LARGE FIX. Identical to the LARGE option but with an alternative top track profile for false ceiling applications.

Optional fixed panel options also available utilising different preformed top tracks with in built slot for a fixed panel immediately adjacent to the sliding panel.

NO DRILLING OF GLASS REQUIRED.

Optional fixed panel options also available (F) utilising different preformed top tracks with in built slot(s) for fixed panel(s) immediately adjacent to the sliding panel.

Full range of screw fixed end cover caps to suit standard sliding and single and double fixed panel variations to complete the top rail appearance and to create a very aesthetically pleasing assembly at the head of the installation.

Softbrake

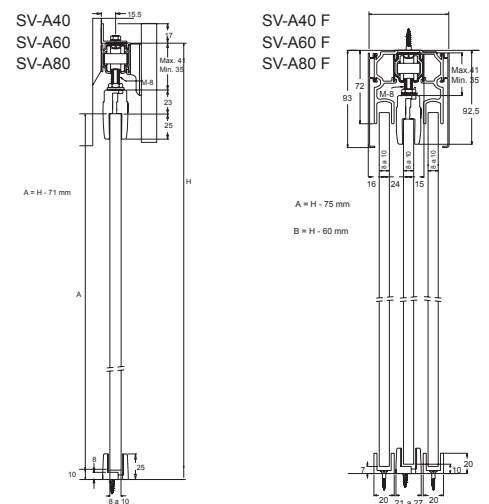
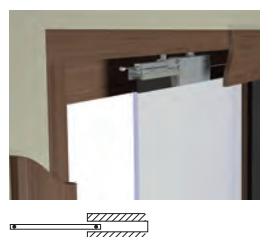
Application. High quality **soft close braking** mechanism for **straight sliding** frameless glass doors. For domestic or light / medium duty commercial glazed partitions.

Features. Suitable for use with straight sliding systems for frameless glass panels.

A patented two stage mechanism; firstly a piston gently slows and stops the sliding door then the closing mechanism gently and quietly pulls the door into the fully closed or open or both position.

Mechanism acts only on the last 100mm of the doors travel, thereby protecting the edge of the door from striking the frame jamb on either or both the opening and closing cycles.

Code	Length	Description	Code	Length	Description	
00 66 20	2 m	Top track. Anodised aluminium SAA Not suitable for SV-Softbrake set	00 64 20	2 m	Pelmet cover for fixed glass. Anodised aluminium. SAA	
00 66 30	3 m		00 64 30	3 m		
00 66 50	5 m		00 64 50	5 m		
00 66 21	2 m	Top track. Aluminium. Not anodised Not suitable for SV-Softbrake set	00 64 21	2 m	Pelmet cover for fixed glass. Anodised aluminium. White	
00 66 31	3 m		00 64 31	3 m		
00 66 51	5 m		00 64 51	5 m		
0 105 20	2 m	Top track. Aluminium. anodised EXCELLENCE For use with SV-Softbrake set	00 64 22	2 m	Pelmet cover for fixed glass. Anodised aluminium. PSS	
0 105 30	3 m		00 64 32	3 m		
0 105 50	5 m					
00 66 26	2 m	Top track for false ceilings c/w preformed adjacent slot for fixed glass. Anodised aluminium. SAA	00 60 61		Separator plate for fixed glass	
00 66 36	3 m					
00 66 56	5 m					
00 66 22	2 m	Top track for false ceilings. Anodised aluminium. SAA	FIXED PANNEL OPTIONS			
00 66 32	3 m		00 63 20	2 m	Fixed glass profile. Anodised aluminium. SAA	
00 66 52	5 m		00 63 30	3 m		
		00 63 50	5 m			
00 66 24	2 m	Full width side fixing profile. Anodised aluminium SAA	OPTIONAL			
00 66 34	3 m		00 63 01	0,10 m	Fixed glass fixing bracket. 100mm section length. Anodised aluminium SAA	
00 66 54	5 m					
00 87 15	1,5 m	Bottom channel for fixed glass. Aluminium not anodised STANDARD profile	SV-LARGE / SV-LARGE FIX			
00 87 22	2,25 m		00 64 34(1)		Full width clip on door trims to give the appearance of a full width top door rail. Anodised aluminium ⁽¹⁾ , Aluminium WHITE ⁽²⁾ or Aluminium PSS ⁽³⁾	
00 87 30	3 m		00 64 35(2)	3 m		
00 87 37	3,75 m		00 64 36(3)			
00 87 45	4,5 m					
00 87 60	6 m					
00 87 24	2 m	Bottom channel for fixed glass Anodised aluminium SAA SLIM profile for 8-10mm glass thickness	00 80 30	3 m		Trim for top track for false ceilings c/w preformed adjacent slot for fixed glass. (Ref 66 26 / 66 36 / 66 56). For the un-used part of the fixed glass slot. Aluminium. Not anodised.
00 87 34	3 m					
00 87 54	5 m					
00 41 22	2 m	Full width bottom guide channel c/w brush strip. Aluminium. Not anodised	COVER CAPS			
00 41 32	3 m		00 80 58	8 mm ⁽¹⁾	LARGE / LARGE FIX top track cover cap set ⁽²⁾ for 8mm or 10mm glass thickness as shown.	
00 41 62	6 m		00 80 60	8 mm ⁽²⁾		
		00 80 62	8 mm ⁽³⁾			
00 56 00		FITTING SETS		00 80 59	10 mm ⁽¹⁾	Anodised aluminium SAA ⁽¹⁾ , Aluminium WHITE ⁽²⁾ or Aluminium PSS ⁽³⁾ .
		SV-A40. Single door complete fitting set	00 80 61	10 mm ⁽²⁾		
		SV-A60. Single door complete fitting set	00 80 63	10 mm ⁽³⁾		
00 86 01		SV-A80 Single door complete fitting set FOR SOFTBRAKE APPLICATION	00 67 90	8 mm ⁽¹⁾	EXCELLENCE top track cover cap set ⁽²⁾ when clip on pelmet cover is used with softbrake.	
			00 67 92	8 mm ⁽²⁾		
			00 67 91	10 mm ⁽¹⁾		
			00 67 93	10 mm ⁽²⁾	or Aluminium PSS ⁽²⁾ .	



**TOP HUNG
STRAIGHT SLIDING
INCLUDES FIXED PANEL OPTION**

40 kg 60 kg 80 kg



SOFTBRAKE
Gentle braking
system



Code

SUPPORTS

Code



00 63 03 0,1 m Top track side fixing bracket. 100mm section length. Anodised aluminium. SAA



00 66 59 0,1 m Clip on bracket for timber pelmet covers (not supplied)



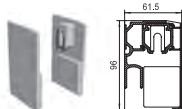
00 66 58 Top track side fixing bracket

SOFTBRAKES

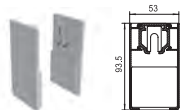


00 67 83 Single softbrake complete set - for use with EXCELLENCE top track ONLY

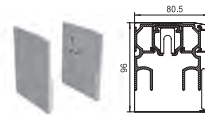
CACHES



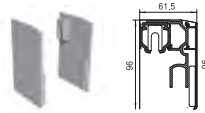
0 105 04 EXCELLENCE top track cover cap set (2) For application Fixed glass profile + Top track + Pelmet cover SAA



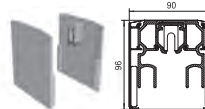
0 105 03 EXCELLENCE top track cover cap set (2) For application Top track + Pelmet cover on BOTH sides SAA



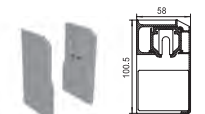
0 105 08 EXCELLENCE top track cover cap set (2) For application Fixed glass profile on BOTH sides + Top track + Pelmet cover SAA



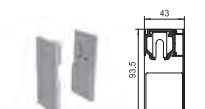
0 105 07 EXCELLENCE top track cover cap set (2) For application Top track + Fixed glass profile + Pelmet cover for fixed glass profile SAA



0 105 06 EXCELLENCE top track cover cap set (2) For application Fixed glass profile on BOTH sides + Top track + Pelmet cover on both sides SAA



0 105 02 EXCELLENCE top track cover cap set (2) For application Top track side fixing profile + Top track + Pelmet cover SAA



0 105 05 EXCELLENCE top track cover cap set (2) For application Top track + Pelmet cover on one side SAA



00 63 02 Corner cover cap for fixed glass Aluminium SAA
00 63 12 Corner cover cap for fixed glass Aluminium WHITE
00 63 13 Corner cover cap for fixed glass Aluminium SSS

SV-A100 / A125 / A100 F / A125 F

**TOP HUNG
STRAIGHT SLIDING
INCLUDES FIXED PANEL OPTION**

100 kg
125 kg



Application. High quality *top hung* sliding door gear systems for *straight sliding* frameless glass doors. For domestic or medium / heavy duty commercial partitions.

Features. Good quality box section anodised aluminium top track common to both systems for ease of stock holding. Optional clip on anodised aluminium pelmet cover to conceal top track and fittings. Top hangers with high quality double rollers c/w ball bearings and elastic function to ensure an exceptionally smooth and quiet sliding action. Vertical adjustment +/- 5mm. Glass clamps to connect hangers to top of glass panel. **NO DRILLING OF GLASS REQUIRED.** Adjustable clear threshold bottom guide as standard. Optional full length aluminium bottom guide channel c/w draft / sound reducing brush strip. Double concealed top track stoppers and retainers.

FIXED PANEL OPTIONS ALSO AVAILABLE. SV-A100F / SV-A125F. Simple additional profiles can be added to the existing standard sets to provide either a single fixed glass panel on either side of the sliding glass panel, or two fixed glass panels on both sides of the sliding glass panel, the latter creating a glass pocket for the sliding glass door.



Code

SV-A100 / SV-A125

0 126 20 2 m Top track. Anodised aluminium. SAA
0 126 30 3 m
0 126 50 5 m
0 126 21 2 m Top track. Aluminium. Not anodised
0 126 31 3 m
0 126 51 5 m
00 41 22 2 m Full width bottom guide channel c/w brush strip. Aluminium. Not anodised.
00 41 32 3 m
00 41 62 6 m

0 116 00 SV-A100. Single door complete fitting set

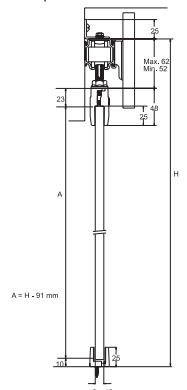
0 126 00 SV-A125. Single door complete fitting set

FIXED PANNEL OPTIONS

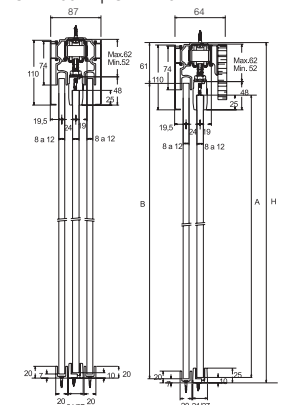
0 103 20 2 m Fixed glass profile. Anodised aluminium. SAA
0 103 30 3 m
0 103 50 5 m
0 104 20 2 m Pelmet cover for fixed glass. Anodised aluminium. SAA
0 104 30 3 m
0 104 50 5 m
0 104 21 2 m Pelmet cover for fixed glass. Anodised aluminium. White
0 104 31 3 m
0 104 51 5 m
0 104 22 2 m Pelmet cover for fixed glass. Anodised aluminium. PSS
0 104 32 3 m

00 60 61 Separator plate for fixed glass

SV-A100 | SV-A125



SV-A100 F | SV-A125 F





NEW

SV Linear + Softbrake

Application. Top quality innovative and contemporary *top hung* sliding door gear system for *straight sliding* glass or timber panels. Combining a smooth and quiet sliding action with a new and contemporary aesthetic appearance. *Linear*, so called because the system integrates seamlessly into its surroundings, with only two lines visible. For domestic and medium / heavy duty commercial timber or glass partitions.

Features. High quality split section top track in anodised aluminium. The inner section is wall mounted while the outer section provides a cover plate available in a variety of finishes to completely conceal all moving parts. End caps also available in different finishes.

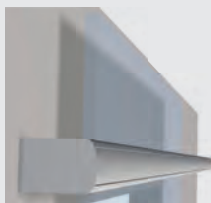
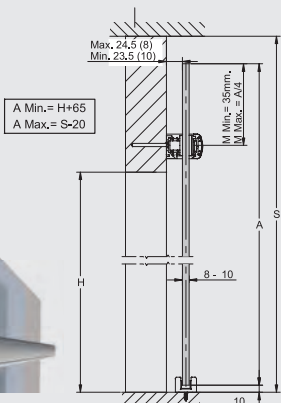
The system can accommodate a maximum door weight of 120kgs and a maximum door height of 3m, which means effectively a complete wall can slide effortlessly to one side.

Single or double soft brake is available (max door weight 80kgs) to provide a cushioning and closing action for the last 100mm of door travel either on the opening and / or closing cycles.

Unusually the top track sits across the door rather than over the top and a maximum of one quarter of the door can actually sit above the track; hence if a 3m high door is used, 500mm can sit above the top track enhancing the impression that the whole wall is moving and almost floating as the door slides.

High quality trolley hangers complete with ball race bearings to ensure a smooth and quiet sliding action. Clear threshold fully concealed bottom guide adjustable for glass thickness 8-12mm.

ALSO AVAILABLE FOR TIMBER PANELS – SEE PAGE 19.



TOP HUNG STRAIGHT SLIDING SOFTBRAKE

120 kg



SOFTBRAKE
Gentle braking system

Packed sets available



33,5x16 mm



36x11 mm



26,2x6,4 mm



Code	Length	Description
0 132 20	2 m	SF-Linear Top track INNER
0 132 30	3 m	Anodised aluminium SAA
0 132 50	5 m	
0 131 20	2 m	SF-Linear Top track OUTER
0 131 30	3 m	Anodised aluminium SAA
0 131 50	5 m	
0 130 20	2 m	SF-Linear Top track cover plate
0 130 30	3 m	Anodised aluminium SAA
0 130 50	5 m	
0 133 20	2 m	SF-Linear Top track cover plate
0 133 30	3 m	Aluminium BLACK
0 133 50	5 m	
0 134 20	2 m	SF-Linear Top track cover plate
0 134 30	3 m	Aluminium WHITE
0 134 50	5 m	
0 135 20	2 m	SF-Linear Top track cover plate
0 135 30	3 m	Aluminium NICKEL PLATED
0 135 50	5 m	
0 130 10		SF-Linear Single door complete fitting set
0 130 11		SF-Linear Single softbrake complete set (80 Kg MAX DOOR WEIGHT)
		80 kg
0 130 01		SF-Linear Top track end cover cap set (2) Anodised aluminium SAA
0 130 02		SF-Linear Top track end cover cap set (2) Aluminium BLACK
		PACKED SETS
90132	2 m	SV-Linear Complete fitting set for single door 2m track NP cover caps MAX DOOR WEIGHT 120 kg
90133	3 m	SV-Linear Complete fitting set for single door 3m track NP cover caps MAX DOOR WEIGHT 120 kg
90134	2 m	SV-Linear Complete fitting set for single door 2m track NP cover caps c/w softbrake (1) MAX DOOR WEIGHT 80 kg
90135	3 m	SV-Linear Complete fitting set for single door 3m track NP cover caps c/w softbrake (1) MAX DOOR WEIGHT 80 kg

SYNCHRONISED BIPARTING



Application. High quality *top hung* sliding door gear system for *straight sliding* frameless glass doors. For domestic or light / medium duty commercial frameless glass partitions. A *synchronised biparting* system which allows a *pair* of biparting glazed doors to operate together.

Features. A special application which utilises the SV-A80 system (see page 26). The standard sets are complimented by an additional cable and pulley system which connects the *two* doors together and allows them to both open and close together, thereby complimenting the high quality sliding action of the standard system with added functionality.

TOP HUNG STRAIGHT SLIDING SYNCHRONISED BIPARTING

80 kg



SV-A40/A60/A80 de 40 a 80kg 8-10 mm 40x30 mm



Code	Length	Description
00 66 23	2 m	Top track. Anodised aluminium. SAA
00 66 33	3 m	
00 66 53	5 m	
00 86 00		SV-A80. Single door complete fitting set (2 sets required)
0 101 14		Complete fitting set for a PAIR of synchronised biparting doors.

TELESCOPIC PROGRESSIVE



Application. High quality *top hung* sliding door gear system for *straight sliding* frameless glass doors. For domestic or light / medium duty commercial frameless glass partitions. A *telescopic* system which allows either *two or three* glazed doors to operate together to form a stepped partition across the opening when fully closed, and a neat stack of panels to one side of the opening when fully open.

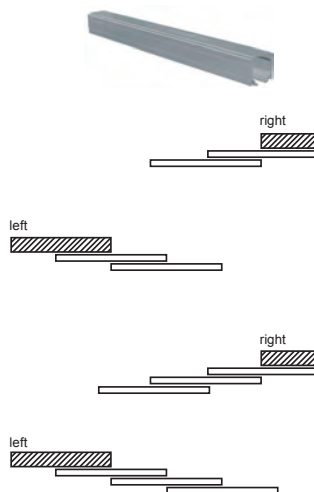
Features. A special application which utilises the SV-A80 system (see page 26). The standard sets are complimented by an additional cable and pulley system which connects the *two or three* doors together and allows them to both open and close together, thereby complimenting the high quality sliding action of the standard system with added functionality.

TOP HUNG STRAIGHT SLIDING TELESCOPIC

80 kg



de 40 a 80kg 40x30 mm



Code	Length	Description
00 66 23	2 m	Top track. Anodised aluminium. SAA
00 66 33	3 m	
00 66 53	5 m	
0 101 17		Complete fitting set for TWO telescopic doors - RIGHT HAND
0 101 18		Complete fitting set for TWO telescopic doors. LEFT HAND
0 101 27		Complete fitting set for THREE telescopic doors. RIGHT HAND
0 101 28		Complete fitting set for THREE telescopic doors. LEFT HAND

SYNCHRONISED TELESCOPIC PROGRESSIVE



Application. High quality *top hung* sliding door gear system for *straight sliding* frameless glass doors. For domestic or light / medium duty commercial frameless glass partitions. A *synchronised telescopic* system which combines the features of the synchronised biparting and *two* door telescopic systems shown above. A total of *four* glazed doors are connected together forming a stepped partition across the opening when fully closed, and neat stacks of panels on both sides of the opening when fully open.

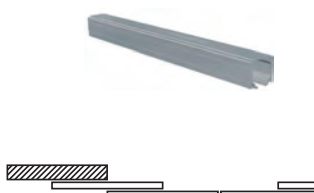
Features. A special application which utilises the SV-A80 system (see page 26). The standard sets are complimented by an additional cable and pulley system which connects the *four* doors together, thereby complimenting the high quality sliding action of the standard system with added functionality.

TOP HUNG STRAIGHT SLIDING SYNCHRONISED TELESCOPIC

80 kg



de 40 a 80kg 40x30 mm



Code	Length	Description
00 66 23	2 m	Top track. Anodised aluminium. SAA
00 66 33	3 m	
00 66 53	5 m	
0 101 16		Complete fitting set for FOUR synchronised telescopic doors

TUBULAR SYSTEMS STAINLESS STEEL

Designer top hung or bottom rolling sliding door gear systems for straight sliding timber and frameless glass partitions. All tracks and fittings in grade 316 stainless steel. An exceptionally smooth and quiet sliding action complements an elegant and stylish appearance. Outstanding value for money. For INTERIOR domestic or light / medium / heavy duty commercial partitions. Unique bottom brake stops c/w lead in feature.

FURNITURE
TIMBER
INDUSTRIAL
GLASS
STAINLESS STEEL

SV-I45 SV-I46



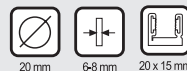
Application. High quality *top hung* sliding door gear system for *straight sliding* domestic or light / medium duty *shower cubicle (SV-I45)* or *partition (SV-I46)* applications in *frameless glass*.

Features. Stainless steel tubular top track. Fixings for side walls or glass over panels. Also for fixing to end walls. Corner applications possible. Clear threshold designer bottom guide.

Alternative systems are available for shower applications to suit 10-12mm thick glass and panel weights up to 120Kgs.

TOP HUNG STRAIGHT SLIDING STAINLESS STEEL

45 kg



Code	Length	Description	Code	Length	Description
00 53 20 00 53 30 00 53 60	2 m 3 m 6 m	Top track. Tubular stainless steel. SSS	00 50 58		Top track side fixing bracket to glass. Concealed
00 50 06		SV-I45. Single door complete fitting set	00 50 59		Top track side fixing bracket to wall. Concealed
00 50 07		SV-I46. Single door complete fitting set	00 50 67		Top track end fixing bracket to wall
00 51 58		Top track side fixing bracket to glass. Standard	00 50 65		Top track hinged bracket for corner applications.
00 51 59		Top track side fixing bracket to wall. Standard	0 120 53		Bottom brake stop with lead in feature. RIGHT hand
			0 120 54		Bottom brake stop with lead in feature. LEFT hand

SV-I120 SF-I120



SV-I120

SF-I120

Application. High quality *top hung* sliding door gear system for *straight sliding* medium / heavy duty partition applications in either *frameless glass (SV-I120)* or *timber (SF-I120)*.

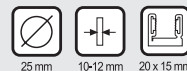
Features. Stainless steel tubular top track. Fixings (standard or concealed) for side walls or glazed over panels. Also for fixing to ceilings or end walls. Corner applications possible. Clear threshold designer bottom guide.

Alternative systems are available for frameless glass or timber doors up to a max weight of 240Kgs.

TOP HUNG STRAIGHT SLIDING STAINLESS STEEL

120 kg

120 kg



Code	Length	Description	Code	Length	Description
0 120 20 0 120 30 0 120 60	2 m 3 m 6 m	Top track. Tubular stainless steel. SSS	0 120 63		Top track side fixing bracket to glass. Concealed <small>* For SV-I120 and SF-I120</small>
0 120 22* 0 120 32*	2 m 3 m	Top track. Tubular stainless steel SSS Machined for concealed track fixing brackets	0 120 64		Top track side fixing bracket to wall. Concealed <small>* For SV-I120 and SF-I120</small>
0 120 00		SV-I120. Single door complete fitting set. For glass panels	0 120 80		Top track ceiling fixing bracket. Concealed
0 121 01		SF-I120. Single door complete fitting set. For timber panels	0 120 82		Top track ceiling fixing bracket. Standard
0 120 61		Top track side fixing bracket to glass. Standard	0 120 65		Top track end fixing bracket to wall
0 120 62		Top track side fixing bracket to wall. Standard	0 120 72		Top track hinged bracket for corner applications
			0 120 53		Bottom brake stop with lead in feature. RIGHT hand
			0 120 54		Bottom brake stop with lead in feature. LEFT hand

*2m profile=5 holes/3 m profile=7 holes

SV-I120 Terra

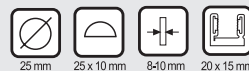


Application. High quality *Bottom rolling* sliding door gear system for *straight sliding* medium / heavy duty *partition* applications in *frameless glass*.

Features. Stainless steel bottom track in full or half round sections. Minimalist top guide channel for top fixing c/w integral draft / sound reduction strip.

BOTTOM ROLLING STRAIGHT SLIDING STAINLESS STEEL

120 kg



Code	Length	Description
0 120 20 0 120 30 0 120 60	2 m 3 m 6 m	Bottom track. Tubular stainless steel. SSS
0 120 21 0 120 41	2 m 4 m	Bottom track. Half round stainless steel profile. SSS
00 41 22 00 41 32 00 41 62	2 m 3 m 6 m	Full width top guide channel c/w brush strip. Aluminium. Not anodised
0 120 01		SV-I120 TERRA. Bottom roller set for single door
0 120 78		Top channel stop set
0 120 53		Bottom brake stop with lead in feature. RIGHT hand
0 120 54		Bottom brake stop with lead in feature. LEFT hand

LIFESPACES



1



sliding folding

SV-I100 D

GLASS



2



3

sliding stacking glass

- 1. SV-P40
- 2. SV-P150
- 3. SV-P250

GLASS



1



2

TIMBER

sliding stacking timber

- 1. SF-P150
- 2. SF-P250

Please note. These systems are manufactured and supplied to order from component stock. Please contact your local Saheco Business Partner for further information including delivery times.

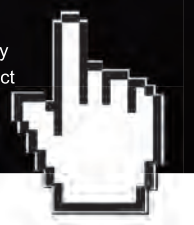


**FULL RANGE
OF CATALOGUES
AVAILABLE**

**You can view and download
our catalogues:**

saheco.com

For more information, or to request your copy of any of these catalogues (English version), please contact your local Saheco Business Partner.



TIMBER / FURNITURE



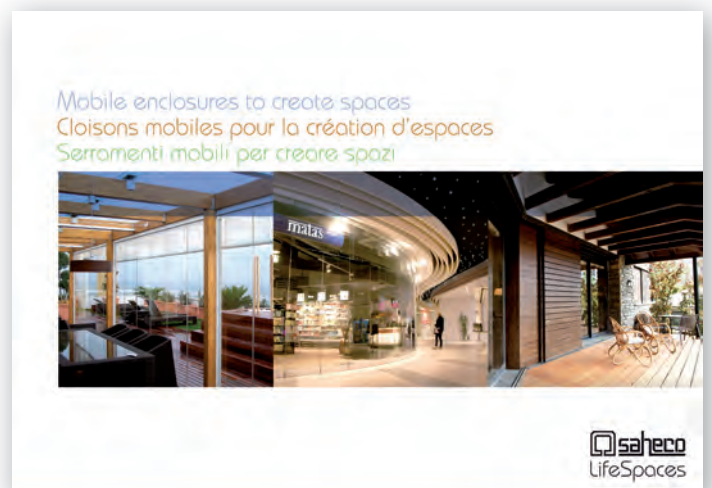
GLASS



STAINLESS STEEL



LIFESPACES





Polígono Industrial de Foradada / 08580
Sant Quirze de Besora / Barcelona / Spain
T +34 93 852 92 23
F +34 93 852 91 59
saheco@saheco.com

Export contact details
T +34 93 852 96 15
F +34 93 855 13 42
export@saheco.com
saheco.com

OFFICIAL SAHECO BUSINESS PARTNER

