



sistemas para puertas correderas

Polígono Industrial Foradada - 08580 - Sant Quirze de Besora (Barcelona)
 Telf. 34-93.852.92.23
 Export. Telf. 34-93.852.96.15
 e-mail: saheco@saheco.com - web: www.saheco.com

MADE IN E.U.

GRUPO TORREMAT MAX. 160 kg

REGISTRO FTI XL

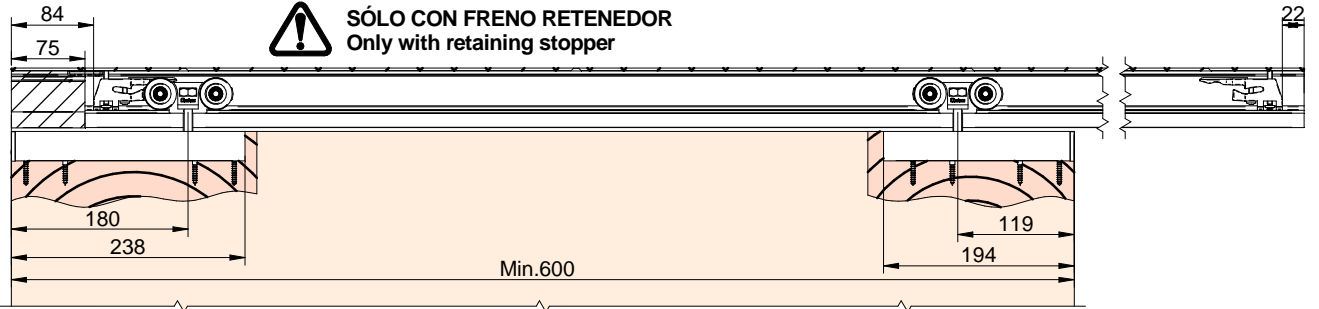
SET.2024

038060915

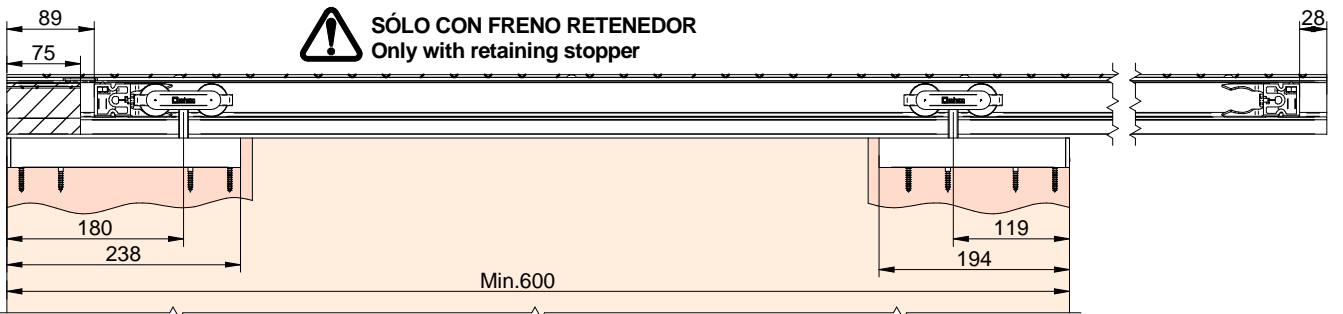
	016310 (SA)	016311 (BL)	016312 (WL)
a			e
1			1
b			g
1			4
c			h
2			4
d			
1			

DIN-7505B 5x30
 DIN-7505A 5x30

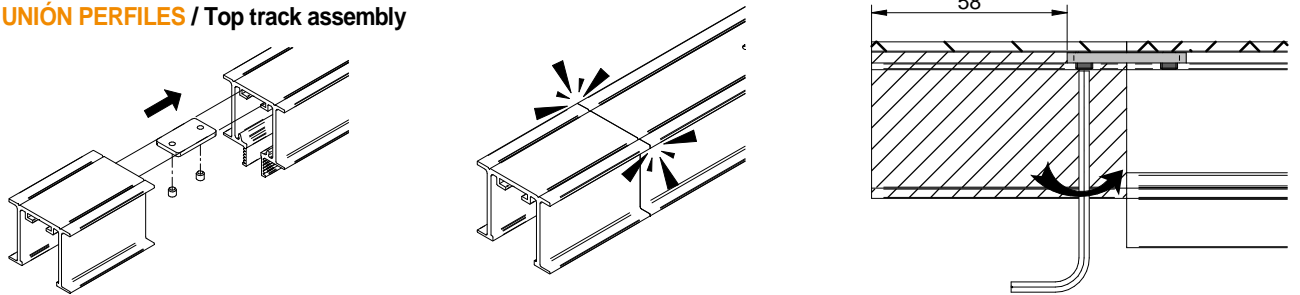
SF-RA P140



SF-RA A110/160

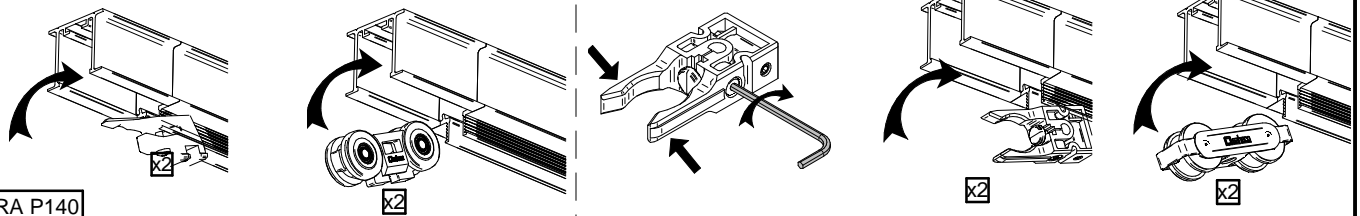


1 UNIÓN PERFILES / Top track assembly



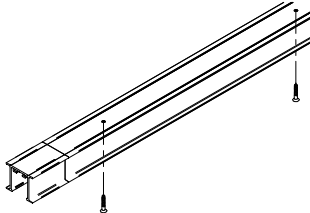
2 MONTAJE COMPONENTES / Assembly components

SF-RA A110/160

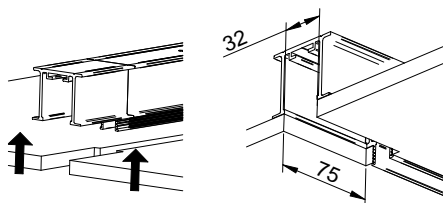


SF-RA P140

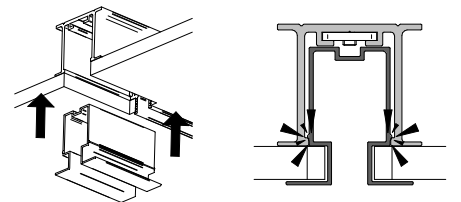
3 MONTAJE PERFIL / Top track ceiling mount



4 MONTAJE PLACAS CARTÓN-YESO / Plasterboard assembly



5 MONTAJE EMBELLECEDOR / Top track cover



A4V